



BUY ONLINE

**PICK UP
IN STORE**

**SHIP TO
HOME**

EARLMAY.COM



2022 Complete Seed Guide

Packaged by Earl May Seed & Nursery
Shenandoah, IA 51601



AWARD WINNER
Marks the vegetables & flowers judged to be the best. Only the highest quality varieties are chosen for this honor.



Earl May's **NEW** seed additions are shown with the symbol at left.



SMALL SPACE
This symbol marks varieties that grow well in small spaces and containers.



HUMMINGBIRD
Marks varieties that attract hummingbirds.



CUSTOMER FAVORITE
This marks our customer's favorite choice of vegetable & flower seed.



BUTTERFLY
Emblem indicates varieties that attract butterflies.

The number preceding the flower or vegetable name is known as the packet number. Use this number for easy identification when you're at any Earl May Garden Center and when shopping at earlmay.com.

variety
▼
765. Rutgers. (77 da
▲ packet no. ▲ days to harvest

CONDITIONS OF SALE PERTAINING TO WARRANTY, DISCLAIMER OF WARRANTIES, AND LIMITATION OF LIABILITY AND OF REMEDIES

Earl May Seed & Nursery L.C. ("Earl May Seed and Nursery") warrants that all seeds, bulbs, plants, materials, or other merchandise sold are as described on the label within recognized tolerances. THIS WARRANTY IS IN LIEU OF ALL OTHER WARRANTIES, EXPRESS OR IMPLIED, INCLUDING, WITHOUT LIMITATION, THE WARRANTIES OF MERCHANTABILITY AND FITNESS. Earl May Seed & Nursery gives no warranty, express or implied, as to productiveness or purity of the product purchased or the crop produced from any seeds, bulbs, plants, materials, or other merchandise purchased. Earl May Seed and Nursery's liability, whether contractual, for negligence, for strict liability, or otherwise, is limited to the purchase price for the seeds, bulbs, plants, material, or other merchandise under all circumstances and regardless of nature, cause, or extent of any loss. IN NO EVENT SHALL EARL MAY SEED & NURSERY BE LIABLE FOR INCIDENTAL OR CONSEQUENTIAL DAMAGES. No liability hereunder shall be asserted unless purchaser or user reports to Earl May Seed & Nursery by registered mail, return receipt requested, any complaints within a reasonable period after discovery (not to exceed 30 days). Seeds, bulbs, plants, materials, or other merchandise not accepted on the basis of the foregoing conditions of sale must be returned within 30 days in the original unopened containers and the purchase price will be refunded. Earl May Seed & Nursery reserves the right to update and change pricing and availability at any time. The foregoing conditions sale represent the entire agreement between the parties as to warranties or any other liabilities of Earl May Seed & Nursery and the remedy therefor.



GARDENING BASICS

Where to Locate Your Garden: A vegetable garden can be made part of an overall landscape plan so that it contributes to its beauty. You don't need a lot of space to raise plenty of fresh vegetables, but if space is limited, you do need to plan carefully. You may want to consider gardening in raised beds or containers to better utilize space. When selecting vegetable seeds or plants, look for compact, bushy varieties that will take up less room.

If you have plenty of room, a southern exposure will produce the earliest crops. **However, using the best soil is key.** The ground should be well drained. Avoid locating your garden where it would be shaded by large trees or buildings. You may want to consider a garden with long rows so that you can cultivate with a rototiller.

Soil Preparation: Spade or plow your garden in the fall if possible. The soil will drain better and your ground will be mellow, dry, and easily worked in the spring.

Laying Out The Garden: Many gardeners have greater success by planning a garden on paper before planting one. Start by marking off space to be used by each vegetable and write down when each is to be planted. Keep a copy as a reference for next year's planting.

Plant tall growing crops (like corn) or those that are staked or trellised (like pole beans) along the north side of your garden so they will not shade low-growing vegetables. Be sure to plant early maturing crops together.

After harvest this opens up space for repeat planting or for a fall garden (see page 21-22). In addition, many crops should be rotated to keep soil-borne disease and insect problems in check.

Starting Plants Indoors: The biggest advantage for starting seeds indoors is to save time. Your plants can be growing before the frost is over and before the soil is dry enough to work. This process also helps avoid problems from insects, birds, heavy rain, weeds and certain diseases.

For the greatest success, keep in mind these basic requirements:

Start Seed in the Proper Growing Medium: The soil should be loose and disease-free. We recommend using a special seed starting mix that is designed specifically for starting seeds. Earl May Garden Centers carry a variety of quality starting aids. **The main advantage of these growing aids over regular garden soil is the ease of transplanting after sprouting to prevent plant shock.** Peat pellets are a popular choice. When placed in water they expand to fit your container. Once expanded, seed is placed directly into the pellet. Peat pots are another option that can be filled with a starting medium for later transplanting.

Keep Seeds Warm and Moist Prior to Sprouting: Make sure your growing material is moist before seed is sown. Place your container in the warmest spot you can find. For faster germination of tomatoes,

eggplants, and pepper seeds, soil temperatures are required to be 75° to 80°F. Cover your containers with plastic domes to prevent drying.

Once the seeds emerge, keep them in full sunlight. **Twelve hours a day is ideal and temperatures for growth should be between 70° and 75°F during the day and 60° and 65°F at night.** If ideal conditions don't exist, improvise. Seed warming mats, supplemental grow lights, miniature greenhouses and other helpers are available at Earl May Garden Centers.

Harden Transplants Off Before Transplanting Outside: Hardening means taking your started plants outside in the daytime and bringing them in at night if frost is likely. This process will help plants adjust to more sunlight and cooler temperatures. This decreases the shock of being outdoors. Once planted outdoors protect the transplants with "hot kaps." This will help warm the soil and protect the tender plants from damaging winds.

Try starting plants indoors this year. It will save you time and money and will satisfy your gardening urge until warm weather kicks in.

TRANSPLANTING guidelines are on [pages 18 & 25](#).

Before sowing seeds, read the packet instructions for proper spacing and depth. Some types will only need to be slightly covered. Keeping the soil moist is critical to starting seeds.



ASPARAGUS (1,400 seeds/oz.)

Soil Care: Asparagus grows well in nearly all types of soil but prefers a well drained, loosened soil. Loosen the soil as deeply as you can. Asparagus is a heavy feeder so make sure to incorporate well rotted manure or a good commercial fertilizer into the soil.



Culture: Once established, asparagus can last a lifetime. One ounce of seed will plant a row 50-feet long. Soak seeds in warm water for an hour, drain and add fresh warm water. Repeat several times. Plant 1-inch deep in rows 18-inches apart, 15 to 20 seeds per foot, thin to 1-inch apart. Keep soil well cultivated. Plants will be ready to transplant the following spring.

Planting: When transplanting young plants, spread the roots out evenly. Holes should be 6-inches deep. Cover the plant in about 3-inches of firmly packed soil. Continue to fill the rest of the 6-inch hole as the plants grow.

In early spring, before shoots appear, the soil should be loosened by shallow cultivation. For both summer and winter, mulch the top dress of the asparagus bed with 2 or 3-inches of well rotted manure or use a good commercial fertilizer. Keep the asparagus bed grass and weed-free.

Harvest: Do not harvest asparagus the first year. The following year it can be cut freely. Using a sharp knife, cut at the soil surface when the tips are 4 to 6-inches high. Harvesting should be discontinued after June 15. During summer the top growth is necessary to provide vitality for the next year's production.

200. Ma y Washington. Rust-resistant. Early and large crops. Plump, tender, green stalks with delicious flavor.

BEANS

Culture: Plant 1-1/2 to 2-inches deep in rows 18-inches to 2-feet apart. Place seeds 4-inches apart in the row. They will begin to grow in 7 to 10 days. Cultivate regularly and shallowly to avoid injury to the roots. Plant at 2 to 3 week intervals for a continuous harvest. In the Midwest the final planting can be made in August. The latest planted beans often produce the finest quality for canning.

DRY SHELL BEAN (1,600 seeds/lb.) (60 lbs./acre)

110. Da k Red Kidney. (95 days) Medium sized plants loaded with big 6-inch pods (Chili Bean).

111. arf Horticultural Taylor. (60 days to green shell) Light green pods splashed with red at maturity. Thick flat pods 5 to 6-inches long.

GREEN POD BUSH BEAN (1,200 seeds/lb.) (60 lbs./acre)

102. Bu pee's Stringless Green Pod. (53 days) Round, slightly curved, 5 to 6-inch pods. Very productive.

100. Bush Blue Lake 274. (60 days) Smooth, slender dark green pods with white seeds. Retains eating condition longest. Pods 6 to 7-inches long.



107. ontender. (48 days) Yields almost a week ahead. Straight 7-inch stringless meaty pods. Drought, heat, disease resistant.

104. Imp oved Tendergreen. (52 days) Dependable yields of 6 to 7-inch tender, dark-green pods. Excellent for canning, freezing, or fresh cooked.

106 Royal Burgundy. (50 days) Round, tender purple pods that turn dark green when cooked. Especially good for freezing.

108. Sle derette. (53 days) Large yield of 5-inch dark green pods. White seed develops slowly. Sturdy 14 to 16-inch plants. Excellent for freezing and canning.



105. Topcrop. AAS. (50 days) Long, smooth, meaty, dark green, 6-inch stringless pods. One of our top sellers.

LIMA BUSH BEAN (400-600 seeds/lb.) (30-60 lbs./acre)



112. ordhook 242. AAS. (Potato Lima) (70 days) Heavy yields both early and late in season. 3 to 4 big plump beans in each pod.

113. derson Bush Lima. (65 days) Prolific bearer, delicious flavor. Small white seed. Long time favorite for home canning.

POLE SNAP BEAN (1,200 seeds/lb.) (40 lbs./acre)



133. Blue ake FM 1. (65 days) Superior, white seeded variety. Pencil-smooth pods grow 6 to 7-inches long. Stays smooth and firm when cooked and canned. Mature white dry beans are great for soups and baking.



134. entucky Blue. AAS. (58 days) Early. White seeded variety. Round, straight pods 6 to 7-inches long. Good for eating fresh, canned or frozen.



WAX POD BUSH BEAN (960-1,200 seeds/lb.) (60 lbs./acre)

129. C erokee Golden Wax. (49 days) Straight, oval, 5 to 6-inch black seeded pods, turn yellow before picking. Flesh is entirely stringless.

BEETS (19,200 seeds/lb.)

Culture: Beets are easy to can and make great pickled beets. They respond to good rich soil. Plant in rows 18 to 24-inches apart. Cover 1/2 to 1-inches deep. Thin plants to 3 or 4-inches apart. Plant beets early and continue planting every few weeks until the middle of July.

202. Cyli dra. (58 days) Medium-long, smooth, cylindrical, dark red roots grow up to 6-inches long, 1 3/4-inches across, and remain tender.



205. D oit Dark Red. (60 days) Best main crop and canning varieties. Globe-shaped, smooth, uniform. Solid, deep red flesh. Heavy yields. Grows 2 1/3 to 3-inches.

206. Early Wonder. (50 days) Extra early. Smooth, clear skinned, large, semi-globe shaped. Uniform size 3 inches across.

214. ainbow Blend (60 days) Stunning mixture of five beetroot colors: red, yellow, white, and striped. Delicious when eaten hot, cold, cooked, or pickled.

212. Red ce Hybrid. (48 days) Extremely smooth, fast growing. High sugar content. Drought and disease resistant. Dark red, globe shaped.

208. Ruby Queen. AAS. (54 days) Extra early. Uniform deep red color. Rounded, smooth shape. Very tender.

BROCCOLI (5,000-9,000 seeds/oz.)

Culture: Broccoli likes loose and well-drained soil. Start your plants inside and set out when temps reach 60°. Place plants in rows 12 to 24-inches apart and leave 2 to 3-feet between rows. Plant when soil reaches 60°F in the spring. Broccoli requires a lot of nitrogen for best yield. It belongs to the cauliflower family, but withstands more heat and cold.

934. Castle Dome Hybrid. (75 days) Early maturing with excellent holding ability. Compact, open plant produces uniform, medium green, deep and domed heads with small, tight beads. Offers good heat tolerance and cold vigor. Tolerance to Hollow Stem and Brown Bead.

931. Waltham 29. (74 days) Heirloom. Prized for its 4-6", dark, blue-green heads with large side shoots. Good cold resistance. Excellent for market & freezing.

BRUSSELS SPROUTS (8,500 seeds/oz.)

Culture: Brussels Sprouts belongs to the cabbage family and produces 50 to 75 tiny heads (like little cabbages) that grow along the stalk. Heads produce a delicious, mellow, cabbage-like flavor. For best results start plants indoors, set out later.

940. Long Island Improved. (90 days) Heirloom. Semi-dwarf plants are 24 inches high with exceptional yields of 1-2 inch flavorful Brussel sprouts. Short, self-supporting stems. Flavor is sweeter if harvested after frost.

CABBAGE

Culture: Cabbage favors the cool, moist, early spring season. Start plants inside and set them out as early as possible in the spring. Set plants in rows 2-1/2 to 3-feet apart and 18 to 24-inches apart in the row. Keep well cultivated.

HYBRID (6,000 seeds/oz.)



241. Stonehead. AAS. (75 days) Round, solid heads weighing 4 pounds. Short stem core. Tolerance to cabbage yellows.

STANDARD (7,500 seeds/oz.)



232. Copenhagen Market. (68 days) Big, round, solid heads weighing 5 to 6 pounds. Crisp, tender, and fine flavored.

CARROTS (20,000 seeds/oz.) (2-4 lbs./acre)

Culture: Sow in rows early in the spring, or as soon as you can work the soil. Drop about 3 or 4 seeds per inch and cover 1/2-inch deep. Space rows 18-inches apart and keep them well cultivated. When the plants are strong enough, thin to 3 or 4-inches apart. For a constant supply of fresh, sweet, tender young carrots, make a second sowing in early May and your last sowing in early July.

306. Danver's Half Long. (73 days) Tender, bright orange, crisp flesh. Best carrot for winter storage. Good when pulled young, but if allowed to stand, will produce smooth, uniform, 7 to 9-inch roots, often 3-inches thick.

305. Ingot Hybrid. (68 days) An early maturing Nantes type. Roots are succulent, crisp, and sweet. Contains twice as much Beta Carotene as open pollinated varieties. Very easy to grow.

301. Little Finger. (65 days) Small, finger, stick-like carrots. Rich orange color. Cylindrical, blunt tip, slight core. 3 1/2 to 4-inches long by 3/4-inch diameter.

309. Rainbow Blend (75 days) Unique mixture of five varieties of baby carrots: Atomic Red, Bambino, Cosmic Purple, Lunar White, and Solar Yellow. Creates a beautiful, highly nutritious, flavorful bunch when paired together.

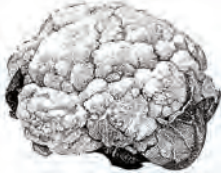
300. Royal Chantenay. (72 days) Fine flavored, early. Grows 6 to 7-inches long with a delicate sweet taste.



303. Scarlet Nantes. (69 days) A true core-less carrot, 6 to 7-inches long, cylindrical, deep orange flesh.

CAULIFLOWER (10,000 seeds/oz.)

Culture: Start the plants inside and set out when temperatures reach 60°F. When heads start to form, gently tie the leaves together over the top with a soft cloth or string.



330. Snowball Y Improved. (80 days) Solid, compact heads 6 to 7-inches thick, weighing 1 1/2 to 2 pounds. Vigorous, stocky plants provide good leaf protection.

CORN

ORNAMENTAL CORN

Culture: Corn is left to dry in the field on the stalk and later suspended in a sheltered area to finish drying. Most varieties of ornamental corn require a long growing season.



166. Carousel (Mini Corn). (7,500 seeds/lb.) (5 lbs./acre) (100 days) An unusual multicolored miniature popcorn. 4-inch ears make great additions to centerpieces or flower arrangements.

168. Fiesta Hybrid. (1,600 seeds/lb.) (8-10 lbs./acre) (101 days) A hybrid variety of Indian corn with various tones of blue, red, yellow, and white. Ears average 7 to 10-inches in length with 50-70% purple husks.

165. Strawberry. (5,600 seeds/lb.) (6-8 lbs./acre) (105 days) Small, bright mahogany-red ears only about 1-inch across. Stalks grow only 4-feet tall and produce 2 to 3 little ears.

167. Broom Corn – Mixed Colors. (18,000-21,000 seeds/lb) (5 - 7 lbs./acre) (100 – 110 days) A mixture of gold, bronze, brown, black, burgundy, red, cream and various shades of these colors. Seed heads form at the top of the plant and vary in length from 12 to 36-inches. Can be harvested for brooms or ornamental uses anytime after the seed head develops.

170. Mini Blue. (7,000 seeds/lb) (90 days) Ideal for year-round decorating. Slim, 2 to 4-inch ears full of solid blue kernels grow on 6-foot plants. Combined with greens or dried foliage, they make attractive centerpieces or cluster arrangements.

POPCORN (3,150 seeds/lb.) (3-5 lbs./acre)

Culture: Plant in hills 18-inches apart, 3 or 4 kernels per hill, or in rows with kernels spaced 6-inches apart. Space rows 2-1/2 to 3-feet apart.

162. Hybrid Robust R997. (105 days) Yellow mid-season butterfly popcorn. Long cylinder-shaped ears, golden, easy shelling kernels, and improved stalk strength. High Resistance: Grey Leaf Spot. Intermediate Resistance: Common Rust, Northern Corn Leaf Blight, and Drought.

164. Hybrid Robust 98114W (110 days) Hulless white, crisp and tender corn. High yielding variety.

SWEET CORN, HYBRID

Culture: Plant in rows 3-feet apart with kernels spaced about 6-inches apart. Cover seed with 1 to 2-inches of soil. Early planting will withstand light frosts and freezes. Make an early first planting, and continuing to make plantings every 10 days, for a continual supply of tender, delicious sweet corn from mid-July to September. Sweet corn is a primary source of vitamins A and B. Normal Sugary Varieties (1,600-2,900 seeds/lb.) (10-15 lbs./acre)



SWEET CORN, NORMAL SUGARY (1,600-2,900 seeds/lb.) (10-15 lbs./acre)

139. 4th of July. (63 days) Extra Early. Yellow, 7-inch long ears. 10 to 14 rows per ear. Plant height 60-inches.

145. Honey & Cream. (84 days) 7 1/2-inch ears with Bi-color kernels. Stays in good eating condition up to 2 weeks. Plant height 89-inches with an ear height of 24-inches.

146. lochief. (86 days) Heavy yields of big, tapered Yellow ears, 8 to 10-inches long. Holds quality for long period. Plants 6 1/2-feet tall.



SWEET CORN!!

10 GOLDEN RULES FOR GROWING EXTRA SWEET (sh2), SWEET CORN also called "SUPERSWEET" or "SHRUNKEN"

1. Adjust planter. Shrunken (sh2) sweet corn seed is smaller than normal corn. There are 1-3/4 times as many seeds per pound. Allow 22,000 to 25,000 plants per acre.
2. Monitor soil temperature. Soil temperature should be 75°F/24°C. Avoid planting in soils below 60°F/13°C.
3. Isolate. Separate acreage plantings of shrunken (sh2) sweet corn varieties by a minimum of 200 feet or by a 10-day planting date/maturity difference.

4. Fertilize. Shrunken (sh2) sweet corn has the same fertility requirements as normal corn.
5. Ensure moisture. Shrunken (sh2) sweet corn must absorb twice the moisture to germinate as normal corn. Avoid dry soil planting.
6. Uniform placement of seed is more important with shrunken (sh2) sweet corn.
7. Plant on shallow side. Ideal depth is 1 to 1-1/2-inches.

8. Upon tasseling, watch for, and record the date when about half of the plants show silk.
9. Field will be ready to pick beginning 18 to 22 days after half-silk, depending on temperature. Warmer weather favors earlier maturity.
10. Refrigerate. To get the best quality, cool corn following harvest. Shrunken (sh2) sweet corn is approximately twice as high in sugar content at harvest. It's even sweeter after harvest due to slow sugar to starch conversion.

CAUTION:
Higher sugar sweet corn needs warmer soils for proper germination.
DO NOT PLANT IN SOILS BELOW 60° F.

Sweet Corn Types

A corn's plant characteristics are guided by a "recipe" contained within each cell. These cells are called a genotype which is also the source of its distinct flavor.

Common names and descriptions of the most popular corn genotypes follow:

Normal Sugary (SU)

Kernels contain moderate but varying degrees of sugar, depending on the variety. Sugars convert to starch rapidly after harvest.

ORDER ONLINE

IN STORE PICK UP
OR
SHIP TO HOME

EARLMAY.COM

Sugar Enhanced (SE)

This gene, when present, modifies the normal sugary (su) gene. The result is increased tenderness and to a varying degree, sweetness. The conversion of sugar to starch after harvest is slowed. All varieties described as "SE" and "EH" are included. No isolation from "Normal" sweet corn is necessary, but it is suggested.

Extra Sweet (SH2)

This gene's name is descriptive of its effect on the appearance of the dry kernel. Its presence creates greatly heightened sweetness and slow conversion to starch after harvest. Common names for this type are "Supersweet" and "Shrunken." Cross pollination between a "Supersweet" and a "Normal" or "Sugar Enhanced" variety will result in tough, starchy kernels in both types. Isolation is required for maximum sweetness from SE and SU varieties.

TripleSweet

Extraordinary sweet corn type. TripleSweet is a new class of sweet corn that marries the exceptional tenderness and flavor of a sugary-enhanced (SE) type, with the extra sweetness and extended shelf life of a supersweet (sh2). Consequently, TripleSweet varieties can be harvested over a longer period and deliver a more consistent, longer-lasting sweetness than the sugar-enhanced (SE) varieties, even under stress from high temperatures. This is possible because 25% of a TripleSweet has sugary-enhanced kernels that are spiked with supersweet genetics and sugar levels. **Isolate TripleSweet from SH2. It is NOT necessary to isolate from SE's.**



153. Silver Queen. (88 days) Big, 8-inch ears with 14 to 16 rows of sugary sweet, tender pure snow-**White** kernels. Stays at the peak of good eating condition longest. Plants 7 to 8-feet tall.

SWEET CORN, SUGAR ENHANCED(SE) (2,100-3,200 seeds/lb.) Increased tenderness and sweetness. Conversion of sugar to starch after harvest is slowed. No isolation from "normal" sweet corn is necessary, but it is suggested.



154. Ambrosia SE. (75 days) An outstanding **Bi-color** with superb eating quality. High tolerance to Stewart's Wilt. Plant height is '78" with an ear height of 20".

155. Bodacious RM SE. (75 days) Exceptionally tender kernels with superior, sweet flavor which holds well after harvest. Plant height is 87-inches with ear height of 20-inches. **Yellow** ears are 8-inches long with a row count of 16.



140. Incredible RM SE. (85 days) Superb eating! Good husk protection with very green husk and flag leaves. Good tolerance to Rust and Stewart's Wilt. Plant height of 96-inches with an ear height of 30-inches which discourages raccoons. **Yellow** ears are 9 1/2-inches long with a row count of 18.

150. Jackpot EH. (82 days) A **Bi-color**, that delivers excellent eating quality requested by roadside markets and home gardens. The 8.8-inch ear consistently fills to the tip with 16 to 18 rows of flavorful tender yellow and white kernels. Resistant to common rust, and tolerant to Northern Corn Leaf Blight and Stewart's wilt. Plant height 72-inches.

147. Kandy Korn SE. (83 days) Big, 8-inch ears with 14 to 16 rows of tender **Yellow** kernels. Stalks are tall, 8 to 8 1/2-feet, sturdy and deep burgundy-red. Husks are bright green and red.

144. Peaches & Cream Mid EH. (83 days) Popular **Bi-color** produces 8 1/2-inch ears with 18-20 rows of tender, flavorful kernels. Long flags on the husk provide good cover for the ears. Great for freezing.

161. Silver King SE. (82 days) A **White** (SE) sweet corn that produces top quality ears for home gardens and roadside markets. Attractive, medium-green husks offer good protection for Silver King's 8-inch ear with 16 rows which fill to the tip. Sweet, flavorful kernels. Tolerant to Stewart's wilt, Northern Corn Leaf Blight, and common Rust.

SWEET CORN, EXTRA SWEET (SH2) Varieties (2,900-3,800 seeds/lb.) Stays sweet longer and holds quality longer after picking. Isolation is required for maximum sweetness, but NOT from themselves.



158. American Dream. AAS. (77 days) Very tender, super sweet **Bi-colored** kernels with outstanding flavor! Vigorous, healthy plants with 16-18 rows on 7" ears. Good tip fill, intermediate resistance to NCLB.



160. Honey 'N Pearl. AAS. (78 days) Superior eating and table quality! An elevated sugar type with SH2 high sugar genes. Large 9-inch ears with tender shiny **Bi-color** kernels.

148. Illini Xtra Sweet. (85 days) Big, 8-inch ears filled to the tips. Twice as sweet at picking; 4 times as sweet 48 hours later. 14 to 16 rows of **Yellow kernels**.

SWEET CORN, TRIPLESWEETS (3,000-3,900 seeds/lb.) Extraordinary sweet corn type; TripleSweet combines exceptional tenderness and flavor from a sugary-enhanced type SE with extra sweetness and the extended shelf life of a supersweet sh2. Consequently, TripleSweet varieties can be harvested over a longer period and can deliver more consistent, long-lasting sweetness than sugary-enhanced (SE) varieties, even under stress from high temperatures.



149. Serendipity. (82 days) This TripleSweet **Bi-color** produces high quality 8-inch ears with medium green husks and 16-18 rows of sugary-enhanced kernels.

CUCUMBERS

Culture: Cucumbers like rich soil and respond well to fertilizer. Plant after all danger of frost is past and soil is warm. Cucumbers may be planted in rows 6-feet apart, 8 to 10-inches apart in the row, or plant in hills 4 to 5 seeds to a hill and 4-feet apart. Plant seed 1-inch deep. Late pickle crops, plant June 1 through 15. Gather fruits daily.



CUCUMBERS, PICKLERS

(1,000 seeds/oz.) (3 lbs./acre)

369. Bush Pickle O.P. (57 days) Compact bush-type plants 2 1/2 to 3-feet across produce a large crop of 3 to 4-inch pickling cucumbers. Excellent quality.

368. Homemade Pickles. (60 days) Bred just for pickles, these can be harvested at 1 1/2-inch for baby sweets, or 5 to 6-inch for dills and spears. Solid, crisp flesh with an excellent bite. Vigorous 5-foot vines with some disease resistance.

362. Parisian Gherkin Fl. AAS. (50 days) Early maturing, small warty gherkin produces a large crop of black spined fruit. Pick when small (1.5") for crunchy mini pickles or slightly larger for standard pickles. Plants are semi-bush, ideal for small gardens and containers. Good PM tolerance.



363. Pioneer Hybrid (Mrs. Pickler). (55 days) All-female pickler. Just the right size for pickling. Medium green skin color, firm white flesh. Excellent flavor.



376. Saladmore Bush Fl. AAS. (55 days) Semi-bush vine makes ideal for small gardens or containers. Versatile. Can be picked small for pickles, or at 7 to 8-inches for fresh slices and spears. Disease resistant or tolerant to CMV, Scab, Antracnose, PM tolerance.

358. SMR 58. (57 days) Black spined, 6 by 2 1/2-inch medium green cucumbers. Prolific bearer. Resistant to Cucumber Mosaic Virus and Scab. Excellent pickling cucumber.

CUCUMBERS, SLICERS

(1,000 seeds/oz.) (3 lbs./acre)

353. Armenian. ((50 days) Pale green, easily-digested skin with a mild-never-bitter flavor and a crunchy texture. Looks like cucumber, technically a melon. Best picked at 12-18 inches. Twists and turns on ground, hangs fairly straight from a trellis. Also known as the Snake Melon and Serpent Cucumber.



371. Burpless Bush Slicer Hybrid. (58 days) Burpless slicer, ideal for small gardens and containers. Dark green, white-spined, straight, 9 to 11-inch long fruit. Small seed cavity and very smooth skin.

359. Dasher II Hybrid. (58 days) Early, high-quality slicer. Produces uniform, 8 1/2 by 2 1/4-inch dark green fruit on disease resistance vines. Growth rate is vigorous. Ideal for a fence or trellis..

360. Diva. AAS. (58 days). Sweet flavor and high yielding. Flavor is best when harvested at 4 to 5-inches. Normally seedless, a few seeds may grow if pollinated by other cuke plants. Produces all female flowers and doesn't require pollen to set fruit, resulting in high yields. Resistant to Scab and Powdery Mildews.

361. Eversweet Fl (55 days) Medium green, never bitter, 8-inch slicing cucumber with smooth skin and small white spines. Robust semi-trailing vines protect the fruit. Can be enjoyed at the younger stage, when the fruit is 4-inches.

352. Olympian Hybrid (Mrs. Slicer). (59 days) An all female slicer. Long, 7 to 8-inch smooth, extra deep green fruit. Tender, clear white flesh, with very few seeds. Disease tolerant.





356. St aight Eight. AAS. (65 days) Ideal table size. Grows 8-inches or more in length, 2 1/2-inches thick. Well rounded, straight, uniform, and deep green.

355. asty Green. (Burpless) (62 days) Burpless variety will produce a bumper crop of mild, crisp, thin-skinned fruit. Harvest the fruits when they are about 1 1/2-inches in diameter, before seeds form.

EGGPLANT (6,000 seeds/oz.)

Culture: Eggplants like a fairly light, rich soil. Plant when weather is warm and safe from frost. Start plants indoors March 15 to April 1. Transplant when large enough, spacing plants 2-feet apart.



294. Bl ck Beauty. (294) (85 days) Beautiful, dark oval fruit, 5-inches across by 6 1/2-inches. Tender and delicious.

GARLIC available in-store only



Culture: Divide into bulblets and plant in full sun, 2-inches deep and 4-inches apart. When the tops turn yellow, dig up and dry in a shady location. Store in a cool and dry place.

ELEPHANT, GARLIC

Culture: Plant bulbs in good, well drained soil, in full sun. Plant 3 to 4-inches deep and 6 to 9-inches apart in a row. When planted in the fall, apply a thick layer of mulch after the ground is frozen. When tops turn yellow, dig up and dry in a shady location. Store in a cool and dry place. Some will produce bulblets which can be planted back or used for seasoning.

KALE (9,000 seeds/oz.)

Culture: Kale belongs to the cabbage family. It forms thick, loose, curled leaves, but no head. Use it in place of greens like spinach, mustard or swiss chard. Follow same culture directions as cabbage. See page 4.

948. Lacinato. (65 days) 10-inch dark, blue-green, strap-like, heavily crinkled leaves are loaded with flavor. Both flavor and nutritional value are enhanced with frost and cold weather. Also known as Dinosaur or Tuscan kale.



947. Red Russian (60 days) Gray-green leaves with veins turning purple after frost as flavor becomes sweeter. Mature leaves are tender, with a mild, sweet flavor.



946. Vates Blue Curled. (80 days) Young tender shoots make delicious greens. Compact plants. Attractive bluish-green color.

KOHLRABI (8,400 seeds/oz.)

Culture: Kohlrabi has a sweet, mild, pleasing flavor similar to both cabbage and young turnips, but many feel it has a better flavor than either. Sow seed thinly in rows 18-inches apart, and cover 1/2-inch deep. Thin plants to 6-inches apart and keep well cultivated.

955. Early Purple Vienna. (60 days) Purplish outside with greenish white flesh. Same tenderness and fine flavor as Early White Vienna.



950. arly White Vienna. (55 days) Mild, sweet flavor, tender and crisp flesh. 2-inch bulbs on plants 10 to 12-inches tall.



952. G and Duke Hybrid. AAS. (52 days) Smooth skinned, pale green uniformly round bulbs. Excellent plant vigor. Bulbs can grow up to 4-inches across without losing fine texture.

LEEK (9,000 seeds/oz.)

Culture: If rain is insufficient, sprinkle with garden hose to maintain soil moisture. Keep soil on the neutral side with periodic applications of agricultural lime. When plants are ready for blanching, pull back mulch and bank soil against the stalks.

958. A erican Flag. (150 days) Delicate, sweet flavor, much like a sweet onion. Tender, white stems, as long as 10-inches. Used to flavor soups and stews.

LETTUCE (20,000 to 25,000 seeds/oz.)

Culture: To have fresh, crisp, tender lettuce at its best, sow leaf lettuce as soon as the ground can be worked. Cover seed lightly, 1/2-inch deep. If you want a constant supply, tender lettuce, sow every two or three weeks until hot weather sets in. Sow again in the fall.



LETTUCE, BUTTERHEAD (BIBB)



414. Bu tercrunch. AAS. (Bibb). (55 days) Thick, juicy, leaves folded into very compact, crisp heads. Wonderful flavor.



413. om Thumb. (50 days) Petite 4-5 inch loose heads, perfect for containers or small gardens. Leaves have a buttery flavor with a nice crisp texture. Perfect for individual salads.

LETTUCE, LOOSELEAF



402. Bl ck Seeded Simpson. (46 days) Extra large, crinkled leaves. Tender crisp leaves are sweet and tasty. Stands heat and drought where others have failed.

416. Ga den Leaf Blend. (40-60 days) Our most popular varieties all in one mixture! Colorful blend includes: Black Seeded Simpson, Parris Island Cos, and Red Romaine. Easy to grow, beautiful in containers or window boxes.

406. G and Rapids. (43 days) Earliest and quickest growing. Loose clusters of broad, light green, wavy, and heavily fringed leaves. Slow to bolt.

412. G een Ice. (45 days) Crisp textured, savory, glossy dark green leaves. Wavy and fringed leaf margins. Slow to bolt. Remains firm and crunchy in salads.



418. Mini G eens Blend. (40-60 days) A perfect salad in one blend! Contains 50% red & 50% green leaf varieties; when mixed together, creates a refreshing & nutritious meal. Should be harvested when young and tender.

415. M lun Blend. (40-60 days) This special blend of lettuce is a complete salad. Because they should be harvested when young and tender, successive planting is the key to always having something to fill the salad bowl. Plants are easy and attractive to grow in gardens and containers.



405. y. AAS. (45 days) A beautifully frilled, loose-leaf lettuce developed for its intense red color. Sweet and succulent. Very ornamental in salads.

408. Sal d Bowl. AAS. (48 days) Short, close-set leaves retain their delicate tenderness and quality, even in hot weather. Slow to bolt.

LETTUCE, ROMAINE



407. arris Island (Cos) (Romaine Type). (75 days) Medium large heads. Broad, frilled, crinkled leaves are crisp, sweet and flavorful with crunchy, juicy midribs.

410. Red Romai e. (70 days) Large 10 to 12-inch heads with crunchy, fresh-tasting midribs. Leaves start green, developing into deep red to bronze when mature. Dark color develops best in cool weather.

MICROGREENS

Culture: Grow in a greenhouse or protected area, seeding in shallow trays or flats. Broadcast seed 1/8-1/4" apart and cover lightly. Bottom water or mist to maintain even moisture. Microgreens must be washed before serving.

420. Mild Mix. (10-15 days) Easy-to-grow blend of mildly flavored greens-contains mizuna, cabbage, kale, and kohlrabi. Mostly green with a touch of purple. Recommended for growing indoors. Harvest at 1-2 inches for use as crisp, tender raw leaves.

421. Spicy Mix. (10-15 days) Spicy, easy-to-grow mix. Colorful blend of red and green mustards with various textures. Spicy flavor pairs well with the Mild Mix. Recommended for growing indoors. Harvest at 1-2 inches for use as crisp, tender raw.

MUSTARD (18,000 seeds/oz.)

Culture: Mustard greens are cooked like spinach or Swiss Chard. Sow mustard very early in the spring. Plant closely in rows. Space rows about 12-inches apart. Good plant for a fall garden too.

964. Green Wave. AAS. (40 days) Long, broad, curled and crinkled leaves. Rich, dark green color. Long lasting and slow to bolt.

962. Tendergreen. (35 days) One of the earliest of all greens. Rich spinach flavor with a very mild taste of mustard. Leaves are oblong, thick and smooth.

OKRA (450 seeds/oz.)

Culture: Okra is a tender plant and should be sown when ground is warm. It likes a fairly rich garden soil. Rows should be 4-feet apart and thinned to stand 2-feet apart in the row. Cultivate often, but not too deep.



968. Clemson Spineless 80. AAS. (55 days) Plants grow 4 to 5-feet tall. Straight, spineless pods of medium green color. Early, high yielding.

970. Hill Country Red. (70 days) Beautiful 5-6 feet tall plants with bronze-red tinged fruit does best in the summer heat. Slender pods will grow up to 5 inches with vibrant flavor. Does NOT tolerate cold temperatures.

ONIONS - See Page 9

PARSNIPS (12,100 seeds/oz.)

Culture: Parsnips like rich, deep-spaded, light garden soil. Plant early in the spring, 24-inches apart, 1/2-inch deep, 2 to 3 seeds per inch. Thin plants to stand 6 to 8-inches apart in the row. Flavor of parsnips is greatly improved by freezing temperatures.

552. All American. (125 days) Fine-grained, tender, clear-white flesh with superior sweet flavor. 10 - 12 inches long, thick shoulders, 2 1/2 inches across. Smooth uniform roots with few prongs.

PEAS (2,000 seeds/lb.) (100 lbs./acre)

Culture: The smooth seeded, extra-early varieties may be planted just as early as you can prepare the ground in the spring. Wrinkled or dwarf varieties can be planted about 10 days later as they are slightly more tender. Peas like a fairly rich, well-drained soil that is not too heavy. Plant 2 to 3-inches apart in the row. Make additional plantings two weeks apart. Support tall varieties on stakes.



171. Alaska, W.R. (55 days) Extra early, hardy and prolific. Wilt-resistant. Vines 2 to 2 1/2-feet tall. Great for canning and table use.



174. Frosty. AAS. (65 days) Best pea for freezing. Sturdy plants grow 18 to 24-inches tall.

178. Green Arrow. (68 days) Long, slender 3 1/2 to 4-inch pods on 24 to 28-inch tall vines. Ideal for eating fresh or canning.

179. Laxton's Progress No. 9. (62 days) Dwarf sturdy vines 15 to 18-inches tall with giant pods. Excellent fresh, frozen or canned.



180. Little Marvel. (60 days) Canning favorite. Prolific dark-green vines. Plump, well-filled pods. Vines 18-inches tall.

PEAS, EDIBLE POD (2,000 seeds/lb.) (100 lbs./acre)

192. Dwarf Grey Sugar. (65 days) Snow Pea. Large crop of tender pods on 18-inch vines. Pick when young and tender. Lavender blooms.



191. Sugar Snap. AAS. (64 days) 3 1/2 to 5-foot vines. Peas freeze well. Not recommended for canning.

PEPPERS

Culture: Start seed inside in March or April just like tomatoes. Peppers are very tender and shouldn't be transplanted to open ground until soil and weather is warm and all danger of frost is past. Set plants 18 to 20-inches apart in the rows. Space rows 2-1/2 to 3-feet apart.

PEPPERS, HOT (4,000-4,500 seeds/oz.)

580. Anaheim (Red Chili). (80 days) 18 to 20-inch plants bear an abundance of 2 to 2 1/2-inch long, light green fruits which turn red at maturity. Medium pungent.

587. Early Jalapeño. (65 days) The famous Mexican pepper. Dark green fruits are 1-inch across and 2 1/2 to 3-inches long. Turning red when ripe.



Jalapeño Pepper

PEPPERS, SWEET (4,000-4,500 seeds/oz.)

581. California Wonder 300TMR. (68 days) Crisp, juicy, and tender. Extra thick flesh. Squarish fruit is 5-inches long, 4-inches wide. Glossy green, turns red when ripe.

578. Mini Bell Blend. (75-85 days) Miniature red, yellow, and brown bell peppers with a sweet, firm, thick flesh. Adds the perfect color and flavor to dishes. Peppers are one inch in size on 24-inch plants.



584. Sweet Banana. AAS. (58 days) Pungent, but not hot. Long, slender, 6 to 7-inches. Waxy yellow, turning bright red when ripe.

POTATOES - See Page 11

DID YOU KNOW?

On average, spending \$70 on a garden gives you \$600 worth of fresh produce?



ONIONS (7,500 seeds/oz.) (3 to 4 lbs./acre)

Culture: Mellow, rich, slightly sandy soil is best. Sow seed 1/2-inch deep in rows 2-feet apart. When half the onion tops fall over, crop is mature and should be pulled. Onions should be spread out to dry in a well ventilated, shaded place, such as a garage. Store in shallow crate and keep in a well ventilated cool, dry location.

Both short day and long day onions can be planted at the same time. When tops get long, shear off a couple of inches. Short tops allow the plant to put more energy into developing healthy roots. Short day onions will begin to bulb quicker when there are 11 to 12 hours of daylight. Long day onions will wait to bulb when there are at least 12 to 14 hours of daylight.

ONIONS, SEED

515. e Libson (White Bunching). (65 days) This popular, easy to grow onion produces delicately flavored, slender stems and juicy green tops. Also known as green onions, scallions, or spring onions. Use fresh in salads, dips, and as an appetizer. With repeat sowings, you can harvest from spring through fall anywhere, and year round in mild winter areas.

502. ellow Sweet Spanish. (110 days) Attractive, deep yellow, clear-white flesh. Large size, mild and sweet. Excellent storing quality. **Long day type.**

Onion Sets or Onion Plants

What's the difference?

Sets

- Plant arly, as soon as the soil can be worked. Frost or light freeze won't hurt them.
- Se ve the first green onions at your table.
- Onions ot pulled for the table grow to medium size and keep well. Pungent flavor.
- Most onion sets a e grown from yellow or white Ebenezer seed.

Plants

- T ese are the king of the onion crop.
- o thin, pull young green onions for the table.
- Ma es the giant, prize-winning onions that are mild and sweet.
- So e varieties are good keepers.

ONION, PLANTS

Candy Hybrid (Mid Day). A cross between a long day and a short day onion. Unique, sweet with a mild flavor, provides extreme early maturity and produces jumbo to colossal bulb sizes. Golden brown exterior with attractive white flesh. If stored properly, these bulbs will keep until February or March.

Hybrid Mr. Society (Short Day). This is the sweetest of all yellow onions. Bulbs vary from thick-flat, to almost globe-shaped, and mature very early. The flesh is firm and very juicy. Flavor is so sweet you won't believe it. If kept dry and well ventilated, they should remain usable for up to 4 months.

Red Candy (Mid Day). This is the sweetest, finest textured onion you'll taste. Perfect for sandwiches, salads and relishes. About four inches in diameter. Deep red skin with white flesh.

Texas 1015Y Supersweet (Short Day). This round "grano" variety has developed all the characteristics of a world class onion. Has a thin skin and a mildness you won't believe. The bigger it gets, the sweeter it gets.

Walla Walla Sweet (Long Day). An extremely mild, very large, flattened bulb. This yellow onion will please any onion lover. Excellent raw or cooked. Not a storage onion.

White Bermuda (Short Day). A very sweet, mild onion. Should be used fresh from the garden. An old favorite with crisp white flesh.

White Sweet Spanish (Long Day). Sweet mild, firm and solid a great keeper! Smooth, round onions will average 1/2 to 3/4-lb. Frost proof, so you can set plants out extra early.

Yellow Sweet Spanish (Long Day). A wonderfully mild onion that will keep for months. Great for cooking and slicing, as it is firm textured and mild flavored.

ONION, SETS

Our quality sets are firm, uniform, smooth and solid. Plant extra early, as soon as you can work the soil. Pull some in the spring as green onions and let the rest mature for winter use.

Choose from:
• ellow • White • Red • Mixed

ORDER ONLINE
EARLMAY.COM
CALL
1-800-831-4193

RADISH (34,000 seeds/lb.) (10-12 lbs./acre)

Culture: Radishes are one of the earliest vegetables to mature and do best in a fairly rich soil. Plant seed in rows 12 to 15-inches apart, 1/2-inch deep and as early as the ground can be worked. Thin out plants to stand 2 to 3-inches apart in the row. You can have a constant supply of radishes by sowing every 10 days until hot weather. Since they grow and mature quickly, radishes can be sown between rows of other vegetables.



647. Champion. AAS. (27 days) Crisp and mild! Bright red, round as a ball when planted shallow.



641. Cherry Belle. AAS. (26 days) Round, red, crisp, and solid. Stays mild longer than others. Measures 3/4-inch across.

661. Crayon Color Mix. (28 days) A fun mixture of primary colors that paints a striking palette in your garden. Colors include: Yellow, Pink, Red, and Purple.

640. Early Scarlet Globe. (20 day) Globe shaped, bright scarlet with pure white flesh. Fine grained, crisp and tender.

660. Easter Egg II. (26 days) Red, white, pink and lavender. Roots grow 1 1/4 to 1 1/2-inches wide without getting pithy. Crisp, mild and delicious.

644. French Breakfast. (25 days) When pulled young, it's the most crisp and tender radish. Roots: 3/4-inch thick, 1 1/2-inches long. Bright scarlet with white tip. Tender, crisp radishes when pulled young.



664. German Giant. (29 days) This unique variety produces large, sweet, crisp and mild roots that will grow from marble size to the size of a baseball! Never gets too hot, spongy or woody.

643. Hailstone (Silver Dollar). (27 days) Large, round radishes with white skin and pure white flesh. Crisp and extra mild, even when as big as a silver dollar.

665. Japanese Minowase Daikon. (60 days) Popular, Japanese cooking favorite, this winter radish has giant white roots 12-inches long by 3-inches wide. Sweet and very crisp.

646. Pink Beauty. (27 days) Plant produces large, flavorful, rose-pink, round, smooth radishes. The flesh is white, crisp and very mild.

658. Sparkler. (24 days) Bright red with clear white tips. Very small tap roots. Crisp, white, juicy flesh. Roots 1 1/4-inches in diameter.

666. Watermelon. (55 days) Winter. Large, 3-inch diameter round radishes are crispy, with a mild to sweet flavor. Intense red interior color, similar to a ripe watermelon.

654. White Icicle. (27 days) Pure white, crisp and tender. Grows 4 to 6-inches long. Remains in eating condition longer than any other radish.

RHUBARB available in-store only

Culture: Plant rhubarb in well-drained fertile soil that is well supplied with organic matter. Plantings should be in full sun and avoid sites where trees and shrubs will compete.

Set the root sections upright in the planting hole with buds 1-1/2 to 2-inches below the surface. Space the plants 3-feet apart. Water during the dry months if necessary. Mulch around the growing plants to keep down the weeds and decrease soil temperatures. Cultivate shallowly to avoid root injury.

If seed stalks appear, remove them as soon as they form. They will reduce plant vigor. If plants become over-crowded, they can be divided and transplanted.

SHALLOTS available in-store only

Culture: Shallots prefer full sun and well drained soil; heavy soil is not suitable. Plant bulbs 2 to 3-inches deep and 4 to 6-inches apart in the row with rows 2-1/2 to 3-feet apart. Care should be taken when weeding not to disturb the roots. Use as green onions (even the tops make fine flavoring when finely chopped). If left to mature, lift when the leaves turn brown. Dry in the sun at temperatures of 60°F with good air circulation and low humidity. Larger bulbs can be used, and the smaller ones kept for the next spring's crop.

SPINACH (3,000 seeds/oz.)



Culture: Spinach likes the cool, moist weather of early spring and does best in a good rich soil loam. Plant seed 1-inch deep, 2-inches apart, in rows 18-inches apart.

682. Bloomsdale. (42 days) Extra early and a heavy yielder. Large, crumpled glossy leaves, dark green, high quality. Quick growing. Slow to bolt.

684. Monstrueux de Virofly. (50 days) Large, deep green, smooth, tender leaves can grow up to 10-inches long. Extremely vigorous plants can grow up to 2 feet wide. A great choice for fall planting.

679. Olympia Hybrid. (4,300 seeds/oz.) (45 days) Fast growing and extremely long standing. Smooth leaved hybrid developed for spring and summer sowing. Deep dark green leaves, erect and highly tolerant to Downy Mildew Races 1, 2 and 3.

686. Red Malabar. (85 days) Heat-loving vigorous climbing vines produce glossy, thick leaves that resemble spinach. Dark green leaves are on deep red/purple stems that regrow rapidly summer into fall. Mild Swiss Chard taste.

683. Reflect F1. (28 days) Medium green, round-to-oval leaves on moderately upright plants. Recommended alternative to Tye. High Resistance to Downy Mildew.

Seeds for Small Spaces

Leafy Vegetables

- Kale, Vates - Blue Curled (946)
- Lettuce, Tom Thumb (414)
- Lettuce, Mini Greens Blend (418)

Vegetables

- Cucumber, Burpless Bush Slicer (371)
- Cucumber, Saladmore Bush (376)
- Onion, White Lisbon (515)
- Radish, Cherry Belle (641)

Squash

- Squash, Honey Bear (729)

Herbs

- All



ORDER ONLINE
IN STORE PICK UP
SHIP TO HOME
EARLMAY.COM

ONIONS which is best?

FACTS about Onion Sets

Planting Sets

Before planting divide the sets into two sizes. Use the largest sets for green table onions and the smaller sets for dry cooking onions. YES, that is correct. Plant the largest sets for green onions and the smaller sets for cooking onions.

Green Table Onions

Choose the larger sets, the size of a nickel and larger, and plant in a row with the roots down, 1/2-inch apart and 2 to 3 inches deep. Deep planting produces more white edible stems. In just four to five weeks you'll be serving delicious green onions at your table. For continuous crop throughout summer, plant sets weekly.

HARVESTING & STORING

Green Table Onions

Pull the onions when the tops are about 12 inches high and remove the outer skin. The green tops can be used in soups and salads. If the green table onions become too large, they will have a stronger flavor these onions may be used for cooking.

Dry Cooking Onions

Dry cooking onions are ready to harvest when the tops of the plants begin to fall over. This will occur later in the summer (July and August). Once the tops have dried and fallen, pull the onions and allow them to dry in the shade for a few days before placing them in storage.

Storing Dry Cooking Onions

Only the dry cooking onions can be stored throughout the winter. Once thoroughly dried, tie the tops together with string and hang in a cool dry place. You may prefer to cut off tops, leaving 1 to 1 1/2-inches of stem. Place onions in a mesh bag and hang in a cool dry place. Always keep the onions from freezing.

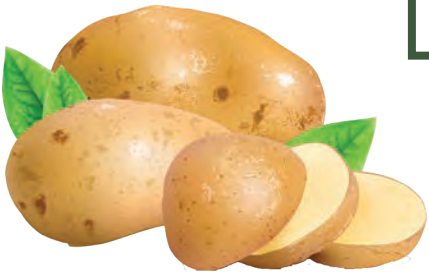
Potato Culture

White or Red
4-lbs. whole potatoes per 50 ft. row.

Seed Potato Chunks: Quarter the whole potato, making sure that each chunk has at least one or more eyes and weighs about two ounces. For very early planting, cut and allow the chunks to heal over, before putting into the ground. The healing-over discourages rotting in cold wet soil. Plant the potato chunks 12-inches apart in rows 3-feet apart, cover in 4-inches of soil.

Soil Care: Good cultivation is important to produce maximum yields. Keep the soil loose and mellow. After the plants are half grown, work up some loose soil around the plants. This protects the tubers from sun scald.

Harvesting Potatoes: Dig potatoes as soon as the vines begin to die. Don't allow potatoes to set in the sun after they've been dug. Cure them in a dry and well ventilated area. Store in a cool dry place.



Sweet Potato Varieties

Beauregard (100 days). Red-orange skin and orange flesh. Matures a little earlier than many varieties. Produces large yields with large number of quality potatoes.

Centennial (100 days). Yields its big crops early. Uniform, medium sweet potatoes with a bright copper skin and deep orange flesh. Fine smooth texture, fine flavor. Probably the variety you buy from a supermarket. Keeps well in storage.

Georgia Jet (100 days). Quick maturing, heavy yielder. Red Skin with orange flesh. Good cold tolerance and high productivity, even in shorter growing season.

Jewell (100 days). Red skin with deep orange flesh. High yielder with top quality sweet potatoes. Keeps well in storage.

Nancy Hall (100 days). The "yellow yam" of the 30's and 40's. Light skin, yellow flesh, waxy and sweet when baked.

Porto Rico (110 days). Perfect for gardeners with limited space. Heavy yielding bush-type plant. Copper colored skin with light red flesh. Delicious old-fashioned flavor and excellent for baking.

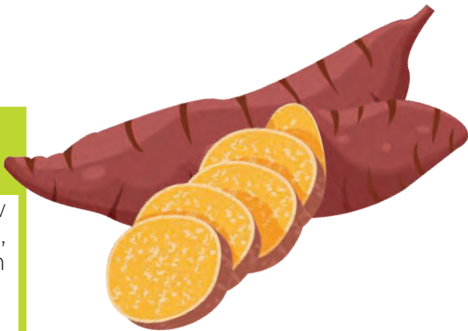
Vardaman (100 days). Bush-type plant with purplish foliage that turns green as it matures. Golden yellow skin darkens into the deep bright orange color soon after digging. Deep orange flesh. High yield, easy to harvest and excellent storage life.

Potato Varieties

- Kennebec
• Our best seller
• Smooth white skin
• Shallow eyes
• One of the finest baking potatoes
• Yields with the best of them
• Maternity - Mid-season
- Norland
• Great yielder
• Very smooth red skin and shallow eyes
• Fine for baking
• Maternity - Early
- Red La Soda
• Red skin, white flesh
• High yield
• Good for boiling, baking, frying
• Shallow eyes
• Maternity - Mid-season
- Earl May Medley
• A mix of our best selling varieties
• Includes: Kennebec, Norland, Viking, Yukon Gold, and Blue
- Viking
• Large, smooth red skin
• Shallow eyes
• Good keeper
• High yielding main crop
• Maternity - Mid-season
- Yukon Gold
• One of the best for microwaving, but also good for boiling, baking and French frying
• Light yellow flesh
• Yellowish buff skin, shallow eyes
• Maternity - Early
- Norkotah
• Medium-brown color
• Oblong shape
• Versatile and flavorful
• Early maturing

DAYS TO MATURITY

- Early - 65 Days
- Mid - 80 Days
- Late - 90+ Days



ORDER ONLINE EARLMAY.COM

OR CALL 1-800-831-4193

SQUASH

Culture: The general culture for squash is about the same as for melons. Winter varieties need to be gathered before the first frost, and if stored, need to be kept in a dry, warm, well ventilated place; will keep until spring.

SQUASH, SUMMER (4,800 seeds/lb.) (4-6 lbs./acre)



736. Ambassador Hybrid. AAS. (Zucchini) (50 days) Bushy, vigorous plants bear dozens of waxy, dark green fruits with crisp, tender white flesh. Best picked small, 8 to 10-inches.



733. Black Beauty. AAS. (Zucchini) (50 days) Spineless, almost seedless. Compact, semi-bush plants produce uniform, straight, smooth, glossy green fruits of excellent quality even when relatively large.

732. Dark Green Zucchini. (50 days) Early, vigorous bush-type plants produce straight, smooth, dark-green mottled fruits. Flesh has a light green tint, firm texture, and mild flavor. Best harvested at 6 to 8-inches.

714. Early Prolific Straightneck. (50 days) Heirloom. Bush-type plants produce an abundance of creamy, yellow-skinned fruits. Semi-open growth habit. Best harvested at 8-inches.



735. Gold Rush Hybrid. AAS. (Zucchini. (50 days) Uniform fruits are smooth, bright, golden orange. Easy to grow, easy to harvest.

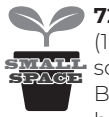
715. Summer Golden Crookneck. (50 days) Bush like vine, heavy yielder. Slightly warted fruits with bright yellow skin. Fine texture and flavor.

SQUASH, WINTER (2,000 seeds/lb.) (3-4 lbs./acre)

721. Burgess Buttercup. (93 days) One of the best small winter squashes. Dark green turban shaped fruits weigh 3 1/2 to 4 pounds. Seed is centered in blossom end. Thick orange flesh is fine textured, dry and sweet. A good keeper.



728. Early Butternut Hybrid. AAS. (76 days) Very early, short vines, with smooth golden tan 2 1/2 pound fruits. Uniform thick necked, with rich orange flesh. Good winter keeper.



729. Honey Bear, AAS (Bush Acorn) (100 days) Personal sized, sweet acorn squash weighing 1 pound or less. Bred to be baked and served in the half shell. Bushy, compact plant, 2 to 3-feet tall produces 3 to 5 dark green fruit.

Squash cross-pollinates with one another & must be cultivated a mile apart if growing for seed. Squash will not cross with cucumbers or melons, but will cross with zucchini and gourds.



730. Table Queen (Acorn). (75 days) Dark green, hard shelled fruits have rich, orange-yellow flesh with delicious sweet flavor. Matures mid-season. Good winter keeper. 5 1/2 by 4-inch fruits weigh about 1 1/2 pounds each.

725. Turks Turban. (100 days) This popular squash (sometimes called a gourd) does double duty as a decoration or as part of a delicious meal. The turban shaped fruits have colorful shells and sweet, meaty golden flesh. Excellent baked, steamed, microwaved or dried as a gourd. Stores well.

710. Vegetable Spaghetti. (100 days) Mature fruits are yellow, 8 to 10-inches long, and weigh 3 1/2 pounds. Interior is a spiral of spaghetti-like pulp.



727. Waltham Butternut. AAS. (83 days) High quality. 8 to 10-inches in length. Fruits weigh about 3 pounds. Flesh is extremely fine, sweet and light yellow.

SWISS CHARD (1,500 seeds/oz.)

Culture: Sow seed 1-inch deep, in rows 12 to 18-inches apart. Thin to 1 strong plant every 6 to 8-inches. Easy to can.

210. Lucullus. (55 days) Vigorous upright plants, heavily crumpled light green leaves. Withstands hot weather well. Produces until frost.



211. Bright Lights. AAS. (1,500 seeds/oz.) (60 days) A rainbow stem of colors, yellow, gold, orange, violet, green or striped, in addition to the standard red or white. Leaf color is green, dark green or bronze. Improved for tenderness and has a mild chard flavor. Mature plants will be about 20 -inches tall and spread 18-inches.

TOMATO (10,000 seeds/oz.)

7 to 14 days 70° F. Seed should be sown in flats or plug trays. When first true leaves develop, they should be transplanted. Saleable in 6 to 8 weeks. Number of days indicated means days from garden plant to ripe fruit.

Culture: Tomatoes like a mellow, fairly rich soil. Start seed indoors March 1 - 15 and transplant when all danger of frost is past. In a warm climate you can plant directly outdoors, 1/4-inch deep. If you don't plan to stake tomatoes space them 3 to 5-feet apart. For best yields, choose disease-resistant varieties.

TOMATO, HYBRID (10,000 seeds/oz.)

763. Better Boy. VFN (66 days) Indeterminate. 6 to 8 ounce, globe shaped, bright red fruits with firm, meaty flesh and few seeds.

778. Better Bush. VFN. (68 days) Semi-determinate. Requires no staking, pruning, or caging. Attractive foliage with a unique bush habit that produces large meaty fruits. Continues growing and bearing all season long.



750. Big Beef. AAS. VFNT. (73 days) Indeterminate. A red beefsteak-type tomato weighing 8 to 12 ounces, one slice fits a sandwich! Improved for earliness, fruit quality, taste and disease tolerances. Firm flesh with a sweet flavor. Tolerates stress.

770. Big Boy (75 days) Indeterminate. 8 to 10 ounces, thick meaty scarlet red fruits. Good vining tomato.



752. Celebrity. AAS. VFNT. (70 days) Semi-determinate. Large, 7 to 8 ounce globe-shaped fruits. Smooth, uniform ripening. Dark red, firm and meaty with few seeds.

782. Supersweet 100. VF. (Cherry) (68 days) Indeterminate. Outstanding tomato. Vigorous plants produce an abundance of 1-inch fruits. Deep red, exceptionally sweet.

TOMATO, STANDARD

774. Amish Paste. (85 days) Indeterminate. Versatile paste tomato that is exceptional when sliced. Acorn-shaped, bright red, 8 to 12 ounce fruits are thick-fleshed with very few seeds.



775. Heirloom Rainbow Blend. (69-102 days) A truly unique blend of heirloom varieties. Includes old time favorites such as Red and Yellow Brandywine, Mortgage Lifter, Purple Calabash, Amana Orange, Black Krim, Great White, Aunt Ruby's, German Green and Big Rainbow. Large, full flavored beefsteak type fruits on indeterminate plants. Varieties are all distinctly different. This is a blend that will be fun to grow! (Varieties may vary from year to year depending upon lot.)

772. Roma. (Catsup) (73 days) Determinate. Makes the finest catsup, sauce, and preserves. Few seeds, firm, meaty texture. Pear shaped fruits measure 3-inches long and 1 1/2-inches thick.

765. Rutgers. (77 days) Determinate. Main crop. Strong vines and bright red color. Evenly ripens from inside out. Exceptional for slicing and canning.

TOMATOES CONT.

INDETERMINATE:

Plant will have a tendency to spread.

DETERMINATE:

Plant has a compact growth habit.

SEMI - DETERMINATE:

Plant will not spread a great deal, but give it room.

V.F.N. and T.

“V” indicates Verticillium Wilt

“F” Fusarium Wilt

“N” Nematodes

“T” Tobacco Mosaic

If a variety has one or more of the above letters, it indicates that it has been determined to show resistance to that problem.

TURNIPS

(13,000 seeds/oz.) (2 lbs./acre)

Culture: Sow in early spring in rows 18-inches apart and plant 1/4-inch deep. Thin out to stand 5 to 6-inches apart in the row. For a fall or winter crop, sow seeds from July 1 to 15, either in rows or broadcast at the rate of 3-pounds of seed per acre.



818. Pu ple Top White Globe. (55 days) Perfect globe shape. Pure white, fine grained, mild and sweet. Uniform roots up to 5 inches across. Best flavor when 2 to 3-inches.

816. Whi e Lady Hybrid.(50 days) Medium-sized pure white turnip. Very uniform, smooth, round, with exceptionally mild sweet flavor.

MUSKMELONS

Culture: Muskmelon plants are very tender and should not be planted until weather and soil are both warm. Plant in hills 6-feet apart each direction with 6 to 8 seeds in each hill. Plant in warm rich, sandy loam. Cover seeds 1-inch deep. After plants emerge, thin to 3 good, strong plants per hill. For extra early melons, start seed indoors and transplant to open ground, being very careful not to disturb the soil or roots.



MUSKMELONS, HYBRID

(1,000 seeds/oz.) (2-3 lbs./acre)



426. Ambrosia. (86 days) Nearly round, 4 to 4 1/2 pound melons with juicy, sweet, thick salmon colored flesh. Heavy netting - no ribbing. Small seed cavity with tight seed mass.

429. Bu pee PMT. (85 days) Outstanding for earliness, fine texture and flavor. Melons weigh 4 to 4 1/2 pounds. Dependable, heavy yielder. Resistant to Melon Wilt.

MUSKMELONS, STANDARD

(1,000 seeds/oz.) (2 to 3 lbs./acre)

440. Delicious 51. (75 days) Large netted fruits weigh 4 to 5 pounds. Thick orange flesh, extra sweet. A good yielder.



430. Hale's Best Jumbo. (80 days) Delicious, sweet, bright orange-salmon flesh is firm and fine-grained. Small seed cavity. Oval shaped weighing 4 to 5 pounds. Withstands drought well.

448. Min esota Midget. (70 days) Compact 3 foot vines produce large crops of 4 pound fruits. Thick, meaty, golden yellow flesh has excellent flavor due to its high sugar content. Resistance to Fusarium Wilt.

STRAWBERRY

available in-store only

Culture: Plant strawberries in well-drained soil that is high in organic matter. This helps maintain a more uniform supply of moisture and soil temperature. Plant strawberries in rows 3-1/2-feet apart, with plants 18 to 24-inches apart in the row. When planting, put the center of the crown at soil level. If it's too deep it will smother, if too shallow the roots will dry out.



June-Bearing Strawberries

Your main objective the first growing season is healthy plants. Keep all blossoms removed, producing flowers and fruit takes too much of the plant's strength. Remove blossoms by pinching or cutting out the flower stems, not by pulling. Follow up with a good spray program to prevent disease. In late fall or early winter, mulch plants to protect them from winter injury. Generally strawberries produce the greatest yield a year after planting. From then on the size and quantity of the berries gradually diminishes. After your strawberries are through bearing, you can effectively rejuvenate by thinning the patch out with a garden hoe. Leave the most vigorous and best established of the 1-year-old plants (not the ones you originally set out) about 12 to 18-inches apart. You should keep your rows about 24-inches apart as you thin out the plants. Carefully thinned out patches have been maintained in satisfactory production for a number of years, but for the best yields it pays to start a new bed after one generation.

Everbearing/Day-Neutral Strawberries

Culture: During the first growing season remove all blossoms until July 1. During hot dry summer months keep strawberries watered and control competition of runner production versus berry production. Runners use food which would otherwise go for fruit production. Apply a summer mulch about 4 or 5 weeks after the plants are set. To avoid smothering, mulch with a very shallow layer directly around the crown of the plants. Apply a layer of straw mulch as soon as the ground freezes. During the second growing season, keep runners removed. Add fresh summer mulch where needed and keep the bed well cultivated. Day-neutral berries produce throughout most of the summer, with most harvesting done in spring and fall.

WATERMELON

Culture: Watermelons like a rich, fairly sandy loam. Plant in hills 10-feet apart each way, 6 to 8 seeds per hill. Cover seed with 1-inch of soil. After plants emerge, thin 2 to 4 good strong plants per hill. For early melons start seed inside. If you have trouble with wilt, plant special wilt-resistant strains.

WATERMELON, HYBRID

(3 to 4 lbs./acre)

491. w Orchid Fl. (80 days) (9,500 sd/lb) Sweet, bright orange flesh with an outstanding sherbert-like taste. Oval-round bright green fruits with alternating dark green stripes are "ice-box size", weighing between 7-9 pounds each. Average 1-2 fruits per plant.



482. weet Beauty. AAS. (77-80 days) (14,000 seeds/lb.) Superior taste and texture! Vigorous vines spreading up to 9 feet and grow 36 to 39-inches tall. Semi-upright plant habit. Fruit is oblong with dark green rind and lighter green stripes with red flesh. This icebox type or single serving melon weighs 6 to 7 pounds.

492. ellow Baby Doll Fl. (75 days) (7,000 sd/lb) Bright yellow, crisp, juicy flesh with a refreshingly sweet flavor. Uniform oval-round "ice-box" size fruits have alternating bright and dark green striped rinds. Fruits average 6-10 pounds each. Harvest promptly as fruit has a tendency to split when ripe.

WATERMELON, STANDARD

(3 to 4 lbs./acre)

479. Bl ck Diamond. (90 days) (2,800 seeds/lb.) Large dark green melon; round, smooth, with bright red flesh and sweet flavor. Average 40 lbs.

472. Bush Sugar Baby. (80 days) (8,800 seeds/lb.) Compact plants produce round/oval, dark green fruit with scarlet, sweet flesh. Perfect icebox size at 12 pounds. Ideal for gardeners with a small space.

478. Crimson Sweet. (82 days) (12,000 seeds/lb.) Deep red, firm flesh. Very sweet and practically seedless. Weighs 20 to 25 pounds. Heavy yielder. Disease resistant.

485. Sugar Baby. (70 days) (11,000 seeds/lb.) Sweet, tender, red flesh. Thin dark green rind. Weighs about 12 pounds. Vigorous plants, very dependable.

WATERMELON, SEEDLESS

488. Triple Crown. (80 days) Superior eating quality. This seedless watermelon has deep red flesh that is juicy, firm, crisp, and is deliciously sweet. Plants produce high yields of 10 to 18 pound fruit. Requires a normal seeded melon as pollinator. Pollinator is included.



Recommend starting indoors. Growing medium should be moist but not wet. Maintain a temperature of 80-85° F until germination is complete.

Herb Seed

HERBS

Culture: Nearly all herbs should be planted in loose, well drained soil in full sun. Plant after danger of frost, work the soil deeply. Plant seed 1/8 to 1/4-inch deep and 2-inches apart, cover with fine soil and press down well. When plants are about 2-inches high, thin to 6 to 12-inches apart, depending on variety.

HERBS, ANNUAL

927. Arugula, Rocket. (50 days) Adds a robust, peppery flavor to salads. Delicious when mixed with other greens and cooked like spinach. Grow for a spring and fall crop.

908. Basil. Genovese. (68 days) Classic Italian heirloom most famous for making pesto. Dark green, extremely tender and fragrant leaves grow 2-3 inches long. Relatively slow to bolt. Plant is 18-24" tall.

909. Basil, Italian Large Leaf. (78 days) Use green or dried leaves for flavoring.

907. Basil, Lettuce Leaf. (75 days) Giant, crinkled, highly aromatic leaves on bushy, vigorous plants. Slightly serrated lettuce-like leaves grow to 4 inches long. Flavor similar to Sweet Basil. Slow to bolt. Grows 18-24 inches tall.

918. Chamomile. (65 days) Pleasant apple-like fragrance and daisy-like flowers which can be dried and use for relaxing herbal teas. Height 20 inches tall.



926. Cilantro / Coriander. (65 days) Known as Cilantro when grown for its distinctively flavored leaves. It's called Coriander when grown for its aromatic, flavorful seeds. Use to flavor pastries, beans, meats and fish. Plants grow 18 to 24-inches tall.

905. Dill (Fernleaf). AAS. (70 days) Average height 18 to 24-inches. Gardeners who did not have the space before can now plant in patio containers and small gardens.

906. Dill (Long Island Mammoth). (70 days) Grows 3 to 5-feet tall. Leaves are used in salads, dips, vinegars, meat, fish and vegetable dishes. Seeds are used essentially in pickle recipes, to flavor baked goods, cheese, and vinegar.

901. Parsley, Forest Green. (70 days). Rich, deep green leaves, cut and curled.

902. Parsley, Giant of Italy. (75 days) The preferred culinary variety. High yielding, sizable plants produce huge dark green, flat leaves. Intense flavor. Grows 18 to 20 inches tall.

HERBS, PERENNIAL

925. Catnip. (85 days) Used mainly as a treat for cats and produces pale pink or white flower spikes. The aroma of the leaves, whether fresh or dried, make cats kittenish and playful. Grows 24 to 30-inches tall.

916. Chives. (90 days) Hollow, grass-like leaves have an onion-like flavor.

922. Lavender. (180 days) Annual Biennial and Perennial. Grown for ornamental and border effect. Valuable for aromatic, medicinal and flavoring purposes.

924. Oregano. (90 days) This attractive 2 to 2-1/2-foot tall shrub-like plant is grown for its flavorful leaves. Leaves can be used fresh or dried.

921. Rosemary. (120 days) Shrubby evergreen has aromatic leaves. Grows 2 to 3-feet tall.

915. Sage. (Broadleaf). (90 days) Grows 18 to 30-inches tall. Ornamental in containers. Grows 16 to 20 inches tall.

911. Thyme. (95 days) Grown for ornamental and border effects, as well as for aromatic, medicinal and flavoring purposes.

Novelty Seed

GOURDS

1339. Large Kinds Mixed. An assortment of large gourds with several different varieties. Mixes vary by lot and may include Italian Edible, Large Bottle, Calabash, Dipper, etc.

1338. Small Kinds Mixed. A rapid growing annual with beautiful, dense, ornamental foliage, bearing odd shaped and curiously marked fruits. May contain up to eight distinct varieties. Mixes may vary by lot and may include Crown of Thorns, Pear Bi-Color, Small Flat Striped, Nest Egg, Small Spoon, Small Warted, etc.

Gourds are a member of the squash family except they are grown for fun, not food. They're grown like winter squash, but the larger ones can take even longer to mature. Most people will start their plants inside several weeks before the last spring frost date. Seeds take up to 2 weeks to sprout. They will emerge faster if pre-soaked for 48 hours in tepid water.

PUMPKINS

(1,200-3,200 seeds/lb.)

(3-4 lbs./acre)

Culture: Planting directions and culture are about the same as for melons. Do not plant until weather is safely warm. Allow plenty of growing space.

607. Atlantic Giant. (120 days) (approximately 1,200 seeds/lb.) This is the variety for producing blue ribbon pumpkins. Bred for size, Atlantic Giant regularly produces pumpkins over 3 feet across, weighing over 300 lbs. or more. Rounded to slightly flattened pumpkins start out yellowish and mature to orange.

618. Baby Boo. (95 days) A nice companion to Jack-Be-Little. Attractive white fruit averages 2 to 3-inches in width and has edible white flesh. Fruit shape is variable. Harvest before frost, pull while vines are still vigorous for white color. Stressed plants will cause the fruit to be ivory color. Fruit can be stored 12 to 16 months if properly cured.

604. Big Max. (120 days) (1,300 seeds/lb.) Giant pumpkins, many weighing up to 100 pounds or more, given plenty of moisture and fertilizer. Pinkish orange skin, 3 to 4-inches thick, yellow orange flesh.

620. Cinderella. (105 days) (4,000 seeds/lb.) This colorful novelty pumpkin is flattened and deeply ridged. The reddish-orange fruit, weighing 25 to 30 pounds, is only 6-inches high and 15-inches across. Excellent in fall displays or eaten as a winter squash. Also makes excellent pies. A French heirloom variety with resemblance to the fairy tale carriage.

622. Connecticut Field. (110 days) (Approximately 3,900 seeds/lb.) Heavy yielder. Big, golden yellow pumpkins weighing 15 to 25 pounds. Flesh is thick, sweet and fine grained.

624. H wden. (115 days) (3,100 seeds/lb.) A Connecticut Field type but more uniform. Hard shell with rich, deep orange colored flesh. The firm structure has much less tendency to produce flat sided fruit. Beautiful and heavy yielding. 20 to 30 pounds.

601. wden Biggie. (115 days) (2,600 seeds/lb.) Howden Biggie combines large size, true attractive pumpkin shape and beautiful dark orange color. Pumpkin weight ranges from 35 to 60 pounds with thick walls and strong handles. Very good yields and fewer flat-sided pumpkins.

609. J ck Be Little. (105 days) (450 seeds/oz.) One of the world's smallest and most interesting pumpkins. Plant bears an average of 8 miniature pumpkins, approximately 2-inches tall and 3-inches in diameter. Fruit is edible, but usually used as table decorations and miniature Jack O' Lanterns. Properly cured, pumpkins will last up to 8 months.



606. J ck O' Lantern. (110 days) (4,000 seeds/lb.) Smooth skin with bright orange color. Approximately 10-inches high and 8 to 9-inches in diameter, up to 10 pounds. Firm, even textured.

614. umina. (85 days) (1,800 seeds/lb.) A large white pumpkin for autumn decorating! Size varies with growing conditions with an average of 10 to 12 pounds, but can be as large as 20 pounds. Shape also varies from near globular to deeply oblate. Excellent for carving and painting.

602. Magic Lantern Hyb. (115 days) (3,100 seeds/lb.) Medium-large, 16 to 24 pounds. Dark orange in color and medium ribbing. Compact vines with heavy crown set provide top yield potential. High tolerance to Powdery Mildew.

610. Small Sugar Pie. (82 days) (4,000 seeds/lb.) The best pie pumpkin. Fine grained, golden flesh, sugar sweet. Yields heavily. Pumpkins measure 7-inches across and weigh approximately 8 pounds.

608. ee-B-Little. AAS. (85 days) (5,800 seeds/lb.) A true miniature orange pumpkin weighing 8 to 16 ounces. Perfect for interior fall decorations and just the right size for small children to handle Bush habit, spreading only 6 to 8-feet.

GROW & HARVEST PUMPKINS

- Pu ins are an easy-to-grow fruit suitable for all areas of North America. Pumpkins are a long-season crop that require 90 to 120 days growing season.

- A w plenty of space as pumpkins have long, sprawling vines. Pumpkins should be planted in full sun, but can tolerate some shade. They prefer a rich, even sandy or loamy soil, with a pH of 6.2 to 7.0. A well-drained and well-aerated soil is a must. Dig the bed at least 8 to 10-inches deep and incorporate 2-inches of rotted manure or compost into the soil.

- w seeds after all danger of frost is past and the soil has warmed up to 70°F. The seeds will not germinate in cold soil and tender young plants will be harmed by frost. Seedlings grow best when air temperatures are 65° to 75°F.

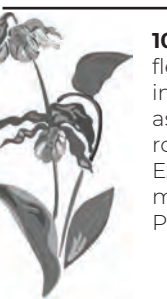
- Plant o 5 seeds per hill to a depth of 1-inch, covering with fine soil. Space the hills 6-feet apart. When seedlings reach 2-inches high, thin all but the 3 strongest plants.

- en harvest time nears, remove any small green fruits. The energy expended by the plant will then go to improving size and vigor of the remaining pumpkins. Pick the pumpkins when they are fully mature and prior to the first hard frost.

- s pumpkins mature, their leaves and vines will shrivel and die off and its color will turn from yellow to orange. The rind will harden as the pumpkin matures. Use a sharp knife or shears to cut the pumpkin from the vine. Leave a few inches of the stem attached to the fruit. Be careful not to break the stem from the pumpkin, it encourages decay.



BACHELOR BUTTON



1072. Polka Dot Mix. Ruffled, tufted double flowers in the traditional deep blue, as well as pink, red, maroon, lavender and white. Excellent for cut flowers or massed in beds or borders. Plant height 15 to 17-inches.

Bee's Friend (Lacy Phacelia)

1048. Bee's Friend (Lacy Phacelia). Lavendar blue flowers with a starburst appearance attract many different species of bees and beneficial insects. This popular wild-flower grows quickly and prefers dry soil. Grows 12-24-inches tall.

Black Eyed Susan Vine

1056. Black-Eyed Susan Vine. Fast growing vines with cheerful blooms in vibrant orange, yellow and white with black centers. Great on a trellis or in a container. Quick to bloom and easy to start from seed.

CANNAS available in-store only

Cannas like a rich sandy loam. Much time can be gained and earlier blooms secured by starting your cannas indoors. The canna roots may be started in flats, boxes, or pots of moist sand so they will be ready to plant outdoors as soon as danger of frost is past.

Cannas require lots of water, especially in dry weather. As soon as frost has touched the tops of cannas, cut them off, about 4 to 5-inches above the ground. Dig up the roots and store them in a cool dry place away from furnace heat or frost. Canna roots may be successfully stored in the same soil in which they were grown. Sprinkling occasionally with water during the winter will prevent them from shriveling or drying out too much.



CARDINAL CLIMBER

1333. Cardinal Climber. Vines covered in a blaze of fiery red flowers with white centers that are about 1-1/2-inches across. Ideal for walls, trellises, arbors and screens.

CAT GRASS (14,500 seeds/lb.)

1332. Cat Grass (Avena Sativa). Satisfy your cat's green tooth. Seed is extremely easy to grow. Provides essential vitamins and minerals for your cat's diet. Helps your cat eliminate furballs.

ORDER ONLINE
IN STORE PICK UP
SHIP TO HOME
EARLMAY.COM



COSMOS (4,500 seeds/oz.)

CULTURE: 3 to 10 days when temperatures are 70 to 75° F. Cover seed lightly.



1084. Cosmic Orange. AAS. Stocky, well-branched, free flowering 12-inch plants produce exceptionally beautiful 2-inch double and semi-double bright orange blooms. Foliage is delicate, feathery green. Useful as a background, border or in pots and as cut flowers. Easy to grow and tolerates poor soil, heat and humidity.



1083. Sensation Mix. AAS. Early flowering 4 to 5-foot plants featuring huge flowers with broad fluted petals in a variety of colors. Finely cut foliage.

DAHLIA available in-store only

May is considered the best time for planting dahlias. Dahlias that bloom when nights become cool produce nicer flowers compared to those which bloom in the hottest part of summer. The tubers should be planted with the eyes about 5 to 6-inches below the surface of the soil. Lay the tuber down flat with the eye pointing upward. It is a good idea to plant a stake right along with the tuber. This way the plant can be tied as it grows and will not become top-heavy and fall over. Cover the tuber with 2 to 3-inches of soil gradually filling in the hole to ground level.

Around the time frost kills them off, cut the tops off about 4 or 5-inches above the surface of the ground. Dig up the tubers and store upside down. With the stem down, place in dry sand, sawdust or peat moss. Store in a cool dry place away from furnace heat or frost. Do not cut tubers apart until ready to replant in the spring.



FOUR O'CLOCKS

1124. Marvel of Peru Mix. An old-time garden favorite. Bushy 2-foot tall plants produce an abundance of bright flowers in many colors all summer and fall. Flowers open about four o'clock in the afternoon and all day if weather is cloudy.



GLADIOLUS available in-store only

Plant gladiolus between April 15 to May 1. For continuous blooms from mid July to almost freezing, plant every ten days thereafter until mid June.

Gladiolus prefer a rather light sandy loam. The soil should be spaded deeply and well pulverized. You will have bigger blooms and better bulbs for the next season if you add 1/2-pound of bone meal to each square yard of soil when preparing it. Gladiolus should be planted about 4-inches deep and about 4-inches apart for best results. Rows should be spaced far enough apart to allow easy cultivation.

The worst insect of gladiolus are thrips. Teat with bug dust once plants emerge. If thrips appear on the leaves during the summer months, spray with Malathion.

When the tops of the gladiolus begin to die down, dig the bulbs up, knock the soil away, cut the tops off about 2-inches above the bulb. Spread out in a cool dry place to cure. In about 3 to 4 weeks, shuck the tops and old bulbs away, leaving the new bulbs nice and clean. Store in a cool dry place where there is no danger of frost, using slatted crates so that they have plenty of air circulation.



1335. Ruby Moon. AAS. Ornamental climbing bean with purple stems and foliage. The sweet scented flowers vary in color (white, pink or purple) and develop into reddish-purple pods. When supported the vines will often grow 15 to 20-feet tall making a wonderful screen or trellis covering. Not recommended for food.

LILIES available in-store only

Unlike most other bulbs, lilies require special planting. Most of the common varieties of lilies we know today are stem rooting lilies. This means that they will develop roots all the way up and down the stem as well as at the base of the bulb. It is necessary that the stem lilies be planted quite deep. Many varieties should be planted as deep as 10-inches, although planting 6 to 8-inches is the usual recommended depth.

The secret to success with lilies is to plant them in a well drained soil. A rich sandy loam is best, but if the soil is heavy don't give up, just spade the ground much deeper. Before planting, put a cushion of sand 1/4 to 1/2-inch deep underneath the bulb.

Another good practice is to slightly tilt the bulb, allowing any water to drain away promptly instead of standing in the bud scales of the bulb preventing rot before growth.



MARIGOLD (7,000-10,000 seeds/oz.)



CULTURE: 3 to 7 days. 75 to 78° F. Sow by early February to induce early budding and compact growth habit or use black cloth to reduce day length to 8 or 9 hours for 28 days. Sow and cover lightly with vermiculite and maintain bottom heat for high soil temperatures. Transplant about 4 weeks after seeding.

Seeds Kids Love to Grow

Vegetables

- Bean, Contender (107)
- Carrot, Rainbow Blend (309)
- Cucumbers, Homemade Pickles (368)
- Cucumber, Armenian (353)
- Peas, Sugar Snap (191)
- Radish, Crayon Color Mix (661)

Leafy Vegetables

- Spinach, Monstrueux De Virofly (684)

Melons

- Watermelon, Crimson Sweet (478)
- Watermelon, Yellow Baby Doll (492)

Squash

- Pumpkin, Big Max (604)
- Pumpkin, Jack O' Lantern (606)

Flowers

- Sunflower, Mammoth Gray Stripe (1108)

Attracting Pollinators

Imagine a world without flowers, fruits, vegetables and more. The importance of pollinators has never been higher. Declining bee populations are a problem, but they aren't the only ones who pollinate. Birds, butterflies, hummingbirds, bats, wasps and flies all play a role in the pollination process.

Attract Hummingbirds

- D ylily • Sweet William
- Lilies • Gl diolus
- etunias • Salvia

Attract Butterflies

- etunias • Marigolds
- Mil weed • Lilies
- Dianthus • eonies
- Sunfl wers • Hollyhocks
- oneflowers • Sweet William

Attract Bees

- Mil weed • Coneflower
- Cl ver

AFRICAN

1169. Crackerjack. Huge flowers often exceeding 5 inches in diameter on 2 1/2 to 3-foot tall plants. Color includes the full range of marigold shades from primrose through yellow, gold and orange.

1186. Dwarf Mix. Uniform 12-inch plants bearing in abundance from early until late in the season. The beautiful combinations of rich dark red and bright gold will be the envy of your neighborhood.

FRENCH

1188. Naughty Marietta. Dwarf, classic, golden yellow flowers with dark burgundy streaks. 6 to 8-inch plants.

1196. Safari Mix. Early to flower with very large blooms on 8 to 10-inch plants. Improved for doubleness on their first flower, and their garden performance is unsurpassed. Well balanced blend of bright colors.

1182. Petite Mix. 8-inch, small, rounded plants. Large blooms include gold, yellow and orange.

MORNING GLORY

(650 seeds/oz.)

1346. Heavenly Blue. Climbing vine producing giant, sky blue flowers 4-inches or more in diameter. Dark green foliage. Vines good for covering arbors and trellises.

1356. Moonflower. A climbing vine producing large, fragrant, white, 4-inch flowers at night or early morning. Good cover for arbors or trellises.

1345. Tall Mix. (1345) 10 to 15-foot tall plants produce a vigorous and showy climbing vine of easy culture producing a profusion of funnel-shaped flowers in a wide range of brilliant colors. Foliage is dark green and very dense, making vines useful for covering arbors, trellises, porches and tree stumps.

NASTURTIIUMS

1203. Whirlybird Mix. Large double blooms on 12 to 14-inch plants. Less foliage and more bloom. A unique range of colors.

PORTULACA

(280,000 seeds/oz.)

CULTURE: 7 to 21 days. Place seeds in plastic bag together with moist growing medium and refrigerate for two weeks. Thereafter, provide light and 70 to 85° F. Sow on sterilized surface. Do not cover seed.

1242. Double Flowering Mix. Brilliant mixture of colors. Plants grow 8-inches high.

SUNFLOWER

(6-8 lbs./acre)

Culture: Keep plants well watered and fertilized. As plants mature, stake them to prevent heavy flower heads from breaking the stalk.

1100. Autumn Beauty. (1,000 seeds/oz.) Well branched plants from 5 to 7-feet tall bearing numerous semi-double flowers, 5 to 7-inches in diameter. The dark brown centers are ringed with “petals” in shades of deep yellow to gold, brick red to burgundy, as well as bi-colored flowers.

1108. Mammoth Gray Stripe. 240 seeds/oz.) Fast growing gigantic flowers producing immense golden blossoms 8 to 14-inches across. Filled with large, tasty sunflower seeds. Easy to grow. Thrives in poor soil with little moisture.

1110. Ring of Fire. AAS. The first uniform gold and red bi-color sunflower. The 5-inch blooms have a chocolate brown center, red ring, and golden yellow petal edges. Plants reach 4 1/2-feet tall and can spread 2 to 3-feet. Produces sunflowers in about 120 days from sowing seed. Excellent background plant in flower beds. Works well for cut flowers.

ZINNIA

(2,500-6,000 seeds/oz.)

Culture: 3 to 7 days. 70 to 72°F. Start seed indoors using a specifically designed seed starting mix. Cover lightly and maintain soil temperature and air movement. Zinnias are also one of easiest flower seeds to grow outdoors. Refer to seed packet for more instructions.

1303. Bush Flowering Mix. (Sprite Mix). Giant flowers on 18-inch plants in a wide range of colors. Excellent for borders and mass plantings.

1300. Cut & Come Again Mix. (Pumila) Fast-growing 1 to 2-1/2 inch semi-double to double blooms. Bright, cheery colors include: pink, purple, orange, red, white and yellow. Long bloom times make for good cut flowers and pollinator plantings.

1317. Dark Jewels Mix. (Cactus flowered). Beautiful, intensely colored giant blossoms produced on 30 to 36-inch tall plants. Plants are husky, tall and free blooming with clean, rich green foliage. Unsurpassed in beds, borders, containers and cuttings.

1287. Fire Flame. (Dahlia flowered). Large, high crowned red flowers measure 5-inches across, 4-inches deep. Excellent in borders, mass planting; Unsurpassed as cut flowers.

1283. Illumination. (Dahlia flowered) Large, high crowned deep pink flowers, often measuring 5-inches across and 4-inches deep. Excellent for borders and mass planting. Unexcelled as cut flowers.

1304. Lilliput Mix. An excellent blend of attractive double 1 to 1 1/2-inch pom-pom like flowers in a wide range of bright colors. Cheerful annuals provide long-lasting color through the heat of summer. Highly effective as a border plant.

1290. Super Giants Mixed. (Dahlia Flowered). Large, fully double flowers often measuring 6-inches across. Petals lay flat upon each other. Excellent for borders and mass plantings and unsurpassed as cut flowers.

1299. Thumbelina. AAS. (6,000 seeds/oz.) 6-inch compact globe shaped plants. Glorious mixture of colors.

1306. Zahara Starlight Rose. AAS. The first white and rose Bi-color zinnia that blooms abundantly on a disease resistant plant. 2 1/2-inch single white flowers are lightly brushed with rose on the interior of the petal. The bi-color pattern can vary depending upon growing conditions. Outstanding in sunny, hot, and dry areas.

Perennial Flower Seed

Direct sowing is an economical and effective method for garden perennials. Start with loose, level and weed-free soil. Take the time to add soil amendments to aid in drainage; such as Earl May Structure, peat moss and/or sand.

Before sowing seeds, read the packet instructions for proper spacing and depth. Some types will only need to be slightly covered. Keeping the soil moist is critical to starting seeds.

Mark the area you’re seeding. Germination time will vary by plant type. Once seedlings have emerged, weed carefully and apply a light layer of mulch to help conserve moisture. As plants mature, fertilize, replenish mulch throughout the growing season.

BEST DATES for TRANSPLANTING FLOWERS		
Variety	Planting Time	Transplant Time
Ageratum	March 1	8 - 10 wks.
Alyssum	March 1	6 - 8 wks.
Begonias	February 1	12 - 16 wks.
Coleus	March 1	7 - 9 wks.
Geranium	February 15	8 - 10 wks.
Impatiens	March 1	7 - 9 wks.
Marigolds	March 15	6 - 8 wks.
Petunia	March 1	8 - 9 wks.
Salvia	March 1	8 - 9 wks.
Snapdragon	February 15	8 - 10 wks.
Verbena	March 1	8 - 10 wks.
Zinnia	March 15	6 - 8 wks.

Flower varieties listed above can be started inside for earlier blooms.
Dates given are approximate, but will work for most gardeners.
INFORMATION IS BASED ON MIDWEST PLANTING CONDITIONS

ORDER ONLINE
IN STORE PICK UP
SHIP TO HOME
EARLMAY.COM

CONEFLOWER

(6,500 seeds/oz.)

1540. Echinacea purpurea. This long-lived perennial produces beautiful, long-lasting and very large 3 to 4-inch purple-red flowers with bronze, dome shaped centers on long 2 to 3 foot stems. Plants are drought-resistant, preferring dry soils, but tolerating moist.

HOLLYHOCK

(3,000 – 6,000 seeds/oz.)

1516. Indian Spring. AAS. This old-fashioned perennial blooms the first year. The single and semi-double mix is in shades of rose, pink, and white.

1515. Summer Carnival. AAS. This long time favorite produces beautiful 3 to 5-inch double blossoms in a rainbow of colors on tall stems from mid-summer to early fall. Excellent as a background for shorter plants, walls, and fences.

LAVENDER

1536. Lavender, Hyssop. Native Midwestern perennial is a top choice for attracting bees and butterflies. Purple plumes gracefully top lush dark green foliage. Leaves have a licorice aroma when crushed. Can be used as a flavoring for cooking and tea.

LUPINE

(1,200 seeds/oz.)

1501. Russell Mix. Spectacular flowered spikes in a wide range of separate colors and bi-colors. Plants are mounded and covered with deeply cut attractive foliage. Use in mass plantings or in the mid to back portion of mixed beds. Excellent cut flowers.

MILKWEED

(6800 seeds/oz.)

1544. Butterfly Milkweed. (Asclepias Tuberosa) Bright orange flowers bloom from mid-summer until early fall. A favorite among Monarch butterflies, it also attracts bees, hummingbirds and other beneficial insects.

1545. Common Milkweed (Asclepias Syriaca) Shrub-like plant provides food and habitat for Monarch butterflies and their caterpillars. Sweetly-scented purple and pink flower clusters top hardy plants that can reach 4-feet in height. Spreads by underground rhizomes, drought tolerant once established.

POPPY

oriental (150,000 seeds/oz.)

1505. Oriental Scarlet. AAS. The Oriental Poppy holds an unrivaled place in the garden for gorgeous effectiveness and profusion of bloom. The cup-shaped flowers are borne on 2 to 3-foot tall plants. Their enormous size, satiny appearance, and dazzling color are remarkable.

SHASTA DAISY

(18,000 seeds/oz.)

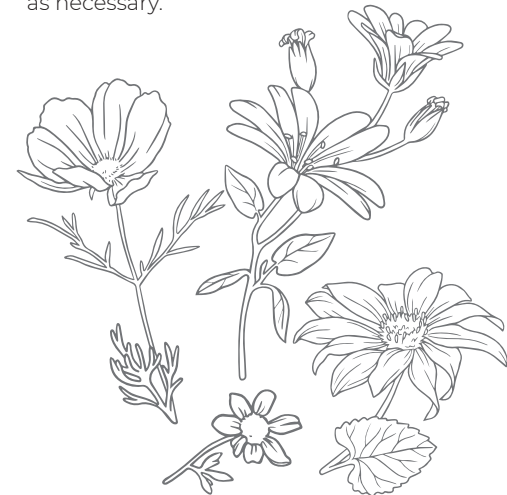
1506. Alaska. Shasta's are unrivaled for production of strong stemmed flowers during summer and early fall. The daisy like flowers have snow-white petals surrounding a rich yellow center. Excellent as a cut flower.



Wild Flower Seed

Wildflower seed is available in many different mixtures depending on its purpose. They can be planted spring, summer, or fall. Nearly all prefer a sunny location. Work the soil until it is loosened and all weeds are removed.

Mix seed with vermiculite to ensure even distribution. After seeding, rake the area lightly so seed will be in direct contact with the soil. Do not cover with soil. Use a fine spray to keep the soil moist (not wet) during germination. After it is established, care for it by watering and weeding as necessary.



1533. Bee Feed Mix. (540,000 seeds/lb.) A mixture of annuals and perennials that provide nectar and pollen to wild bees, honey bees, and other pollinators. Continuous blooms to provide bee forage all season long. (Approximately 6 – 12 lbs./acre) (5 oz./1,000 sq. ft.)

Baby Blue Eyes (A) · Bergamot (P) Blue Flax (P) · California Poppy (TP) China Aster (A) · Chinese Forget-Me-Not (A/B) · Corn Poppy (A) ·Fleabane Daisy (P) · Forget-Me-Not (A) · Globe Gilia (A) · Indian Blanket (A) · Lance-Leaved Coreopsis (P) · Lavender Hyssop (P) · New England Aster (P) · Pla Coreopsis (A) · Purple Coneflower (P) · Rockcress (P) · Siberian Wallflower (B/P) · Sweet Alyssum (TP) · Tidy Tips (A)

1531. Bird and Butterfly Mix. (286,000 seeds/lb.) This choice mixture provides seed and nectar to songbirds, hummingbirds, and butterflies. (Approximately 9 – 18 lbs./acre) (7 oz./1,000 sq. ft.)

Black-eyed Susan (A/B/P) · Blue Flax (P) · Candytuft (A) · Coneflower, Dwf. Red (B/P) · Coneflower, Purple (P) · Coreopsis, Def. Red Plains (A) · Coreopsis, Lance-Leaved (P) · Cornflower, Dwf. (A) · Gaillardia (A) · Gaillardia (P) · Gayfeather (A) · Godetia, Dwf. (A) · Larkspur, Rocket (A) · Lemon Mint (A) · Lupine (P) · Poppy, California (TP) · Sage, Scarlet (A/P) · Showy Milkweed (P) · Sweet Alyssum (TP) · Wallflower, Siberian (B/P)

1529. Midwest Wildflower Mix. (418,000 seeds/lb.) A mix of approximately 21 varieties chosen especially for the Midwest area. Mixture contains a ratio of close to 50% annuals and 50% perennials of the following list. Varieties may vary by lot.(Approximately 6 - 12 lbs./acre) (1 oz./200 sq. ft.)

Aster, New England (P) · Aster Prairie (B) · Aster, Smooth (P) · Aster, Wh Upland (P) · Black-Eyed Susan (ABP) · Daisy, Shasta (P) · Evening Primrose, Dwf. (P) · Flax, Scarlet (A) · Coneflower, Claspig (A) · Coneflower, Greyheaded (P) · Coneflower, Purple (P) · Coneflower, Prairie (B/P) · Cornflower, Dwarf (A) · Coreopsis, Lance Leaved (P) · Coreopsis, Plains (A) · Gaillardia (A) · Gayfeather, Thickspike (P) · Mexican Hat (B/P) · Poppy, Corn (A) · Prairie Clover, Purple (P) · Sunflower, Ox-eye (P)

1532. Native Perennial Mixture. (221,000 seeds/lb.) This mixture provides long-lasting perennials filled with a colorful assortment of American native plants. For use across the U.S. except southern Florida and extreme southern Texas. If weed control is needed the

first year, mow every 3 to 4 weeks, or as often as necessary. Varieties are as follows. Quantities may vary by lot. (Approximately 7 – 14 lbs./acre) (5 oz./1,000 sq. ft.)

Aster, New England (P) · Black-Eyed Susan (A/B/P) · Columbine, Blue (P) · Columbine, Eastern (P) · Coneflower, Grey-headed (P) · Coneflower, Purple (P) · Coneflower, Prairie (B/P) · Coreopsis, La ce-Leaved (P) · Flax, Blue (P) · Gayfeather (P) · Gayfeather, Thickspike (P) · Gaillardia (P), Lupine (P) · Mexican Hat (B/P) · Milkwe Butterfly (P) · Penstemon, Rocky Mtn. (P) · Primrose, Dwarf Evening

1530. Shade Wildflower Mix. (1530) (710,000 seeds/lb.) A mix of approximately 16 varieties chosen especially for shade areas. Mixture requires strong, filtered sunlight or 1 to 4 hours of direct sun per day. Varieties may vary by lot. (Approximately 4 – 8 lbs./acre) (1 oz./330 sq. ft.)

Baby Blue-Eyes (A) · Baby’s Breath (A) · Candytuft (A) · Clarkia (A) Columbine, Dwarf (P) · Columbine, Giant (P) · Coneflower, Purple (P) · Coreopsis, Lance-Leaved (P) · Daisy, Shasta (P) · Dame’s Rocket (P) · Forget-Me-Not (A/B) · Johnny Jump-Up (A/P) · Monkeyflower (A) · Pinks, Sweet Williams (P) · Poppy, Corn (A) · Snapdragon, Spurred(A)

1518. Honey Bee Flower Mix. Years of research on honey bee preferences result in this adaptable annual and perennial flower mixture that provide nectar and pollen all season long. (Approximately 6 – 12 lbs./acre) (4 oz./250 sq. ft.)

Blanketflower (P) · California Poppy (TP) · Cape Forget-Me-Not (B) · China Aster (A) · Chinese Forget-Me-Not (A/ BP) · Corn Poppy (A) · French Marigold (A) · Lac Phace (A) · Lance-Leaved Coreopsis (P) · New England Aster (P) · Prairie Coneflower (B/P) · Purple Prairie Clover (P), Rocky Mountain Penstemon (P) · Scarlet Cinquefoil (P) · Siber Wallflower (B/P) · Sulphur Cosmos. (A) · Sweet Basil (A) · Sweet Mignonette (A) White Upland Aster (P)

1519. Beneficial Bug Flower Mix. A select blend of plants that attract beneficial insects to the garden. Includes lacewings, lady beetles, hover flies, syrphid flies, and parasitic wasps. The beneficial insects help destroy harmful garden pests, such as aphids, thrips, and mites. (Approximately 9 – 18 lbs./acre) (8 oz./1,000 sq. ft.)

Baby Blue-Eyes (A) · Bergamot (P) · Bishop’s Flower (A) · Black-Eyed Susan (ABP) · California Poppy (TP) · Candy Tuft (A) · Cilantro (A) · Dill (A) · Dwarf Cosmos (A) · Fennel (P) · Gaysfeather (P) · Globe Gilia (A) · India Blanket ·Lance-Leaved Coreopsis (P) · Purpl Prairie Clover (P) ·Rockcress, (P) · Shasta Daisy (P) · Siberian Wallflower (BP) · Sweet Alyssum (TP)

1520. Perfect Pollinator Mix. Perfect balanced blend of native annuals and perennials that provide nectar and pollen throughout the growing season. Staggered bloom times ensure both food and beauty throughout the growing season. (7 - 14 lbs./acre) (5oz/1,000 sq. ft.)

Black-Eyed Susan (ABP) · Blue Wing Indigo (P) · Brown-Eyed Susan (BP) · Butterfly Milkweed (P) · Evening Primrose (B) · False Bonset (P) · Gray Goldenrod (P) · Hairy Beardtongue (P) · Ind Blanket (A) · Lance-Leaved Coreopsis (P) · Lavender Hyssop (P) · Lemon Mint (A) New England Aster (P) · Ohio Spiderwort (P) · Partridge Pea (A) · Plains Coreopsis (A) · Purple Coneflower (P) · Showy Tick Trefoil (P) · Slender Mountain Mint (P) · Spot Beebalm (ABP)

ORDER ONLINE
IN STORE PICK UP
SHIP TO HOME
EARLMAY.COM

CODES FOR WILDFLOWERS

(A) Annual

(B) - Bie

(P) erennial

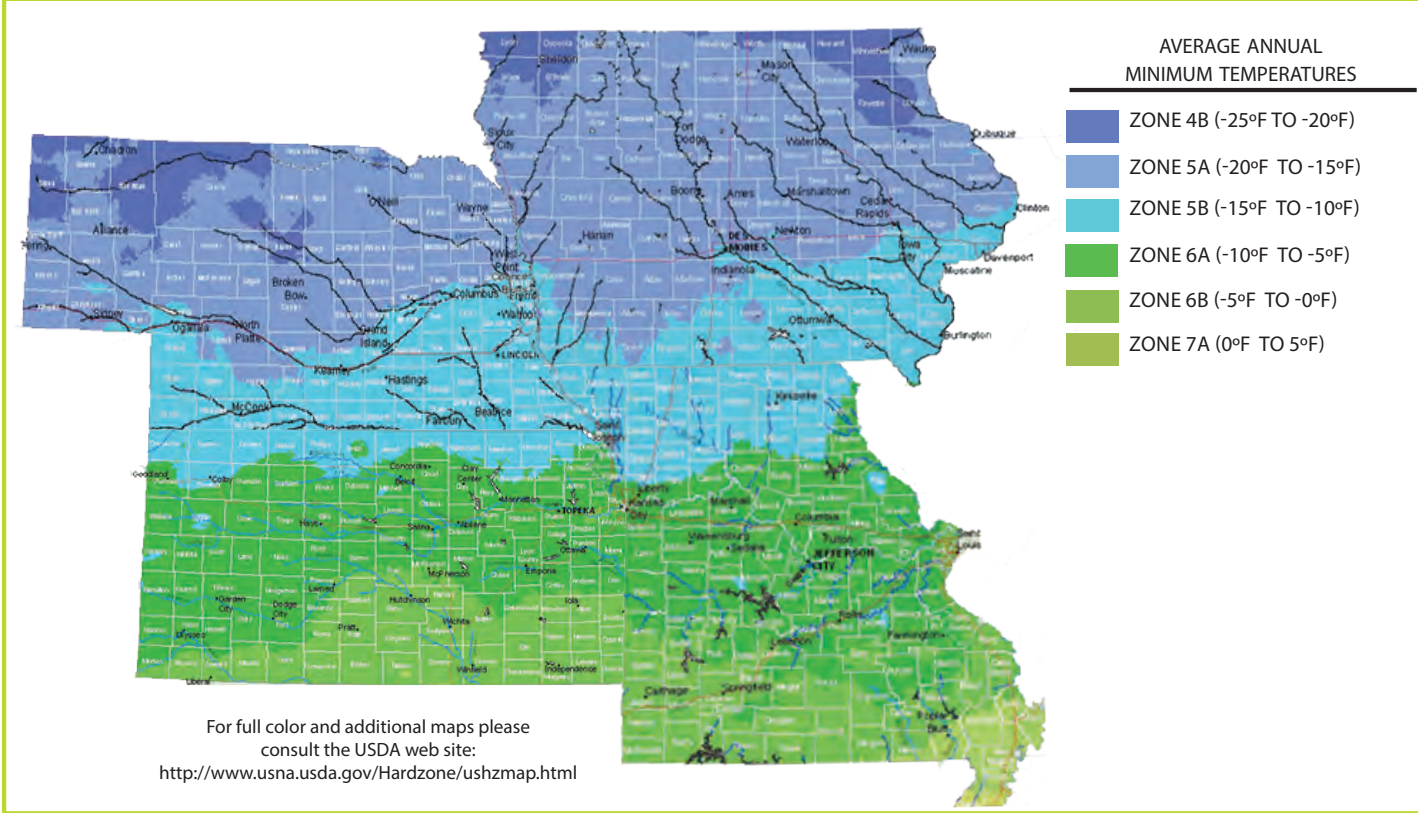
(TP) - Tender Perennial

grown as an annual in cold climates




VEGETABLES FOR FALL GARDENING COLD TEMPERATURE TOLERANCE		
TENDER VEGETABLES	SEMI-HARDY VEGETABLES	SEMI-HARDY VEGETABLES
Damaged by LIGHT FROST	Tolerates LIGHT FROST	Tolerates HARD FROST
BEANS CUCUMBER EGGPLANT OKRA SQUASH SWEET CORN	BEETS CARROT CAULIFLOWER CHARD LETTUCE MUSTARD GREENS	BROCCOLI CABBAGE COLLARDS KALE KOHLRABI PEAS RADISH SPINACH TURNIP
Tender and Semi-Hardy Vegetables: Harvest can be extended by protecting from cold temperatures. Remove protection as temperatures rise above freezing, 32°F.		

MIDWEST ZONES OF PLANT HARDINESS



PLANT FOR A FALL HARVEST

VARIETY	PLANTING VARIETY	DATES TO PLANT	MATURITY (DAYS)	VARIETY	PLANTING VARIETY	DATES TO PLANT	MATURITY (DAYS)
BEAN	105 TOP CROP	JULY 15-AUG. 1	50	LETTUCE	402 BLACK SEEDED SIMPSON	JULY 15-AUG. 10	46
	106 ROYAL BURGUNDY	JULY 15-AUG. 1	50		408 SALAD BLEND	JULY 15-AUG. 10	48
	107 CONTENDER	JULY 15-AUG. 1	48		415 MESCLUN MIX	JULY 15-AUG. 10	40-60
	129 CHEROKEE GOLDEN WAX	JULY 15-AUG. 1	49		416 GARDEN LEAF BLEND	JULY 15-AUG. 10	40-60
BEET	205 DETROIT DARK RED	JULY 15-AUG. 1	60	OKRA	968 CLEMSON SPINELESS 80	JULY 15-AUG. 10	55
BROCCOLI	931 WALTHAM 29	BY JULY 15	75	PEAS	180 LITTLE MARVEL	AUG. 1-AUG. 15	60
	934 CASTLE DOME HYBRID	BY JULY 15	75		191 SUGAR SNAP	AUG. 1-AUG. 15	64
CABBAGE	232 COPENHAGEN MARKET	BY JULY 15	68	RADISH	641 CHERRY BELLE	BY SEPT. 1	26
CARROT	303 SCARLET NANTES	JULY 15-AUG.1	69		647 CHAMPION	BY SEPT. 1	27
	305 HYBRID INGOT	JULY 15-AUG.1	68		664 GERMAN GIANT	BY AUG. 1	29
CAULIFLOWER	330 SNOWBALL Y IMPROVED	BY JULY 15	80	SPINACH	679 HYBRID OLYMPIA	AUG. 1-SEPT. 15	45
					682 BLOOMSDALE	AUG. 1-SEPT. 15	42
CUCUMBER	360 HYBRID DIVA-SLICER	JULY 15-25	58	SQUASH	736 HYBRID AMBASSADOR (ZUCCHINI)	BY JULY 15	50
	361 EVERSWEET F1-SLICER	JULY 15-25	48	SWEET CORN	139 HYBRID 4TH OF JULY (NORMAL)	BY JULY 15	63
	363 HYBRID PIONEER-PICKLER	JULY 15-25	55		SWISS CHARD	210 LUCULLUS	JULY 15-AUG. 1
	371 BURPLESS BUSH-SLICER	JULY 15-25	58	TURNIP		816 HYBRID WHITE LADY	BY SEPT. 1
	376 SALADMORE BUSH F-1-PICKLER	JULY 15-25	55		818 PURPLE TOP WHITE GLOBE	BY SEPT. 1	55
HERBS				<div><div>NOTE: Fall is an excellent time to plant garlic, especially Elephant Garlic, for next season's harvest.</div></div>			
CAN BE PLANTED IN POTS THROUGHOUT FALL & WINTER. MANY WILL DO WELL ON A WINDOW SILL GIVEN ADEQUATE LIGHT AND CARE.							
KALE (BEST EATEN YOUNG)	946 DWARF VATES BLUE CURLED	JULY 15-AUG. 5	80				
	947 RED RUSSIAN	JULY 15-AUG. 5	60				
KOHLRABI	950 EARLY WHITE VIENNA	JULY 15-AUG. 1	55				
	952 HYBRID GRAND DUKE	JULY 15-AUG. 1	52				
	955 EARLY PURPLE VIENNA	BY JULY 15	60				

Planting & maturity dates listed.
However, you can count back from the average first frost date in your area and add 1 or 2 weeks to allow for germination or early frost.

NOTE: Fall is an excellent time to plant garlic, especially Elephant Garlic, for next season's harvest.

*These are suggested varieties. Other short day varieties in these categories may be substituted depending on availability.

COMPANION PLANTING CHART

PLANT	COMPANIONS/EFFECTS	PLANT	COMPANIONS/EFFECTS
ASPARAGUS	Tomatoes, parsley, basil	LEEEKS	Onions, celery & carrots
BASIL	Tomatoes (improves growth and flavor); said to dislike rue; repels flies and mosquitoes	MARIGOLDS	The workhorse of pest deterrents! Keeps soil free of nematodes; discourages many insects. Plant freely throughout the garden
BEANS	Potatoes, carrots, cucumber, cauliflower, cabbage, summer savory, most other vegetables, herbs, & around houseplants when set outside	MARJORAM	Here and there in garden
BEANS bush	Sunflowers (beans like partial shade, sunflowers attract birds and bees), cucumbers (combination of heavy and light feeders), potatoes, corn, celery, summer savory	MINT	Cabbage family & tomatoes, deters cabbage moth
BEETS	Onions & kohlrabi	NASTURTIUM	Tomatoes, radishes, cabbage, cucumbers; plant under fruit trees; de- ters aphids and pest of cucurbits
BORAGE	Tomatoes (attract bees, deters tomato worm, improves growth,& flavor), squash, strawberries	ONIONS	Beets, strawberries, tomato, lettuce (protects against slugs), beans (protects against ants), summer savory
CABBAGE family	Potatoes, celery, chamomile, sage, thyme, mint, rosemary, lavender, beet & onions	PARSLEY	Tomato & asparagus
CARROTS	Peas, lettuce, chives, onions, leeks, rosemary, sage & tomatoes	PEAS	Squash (when squash follows peas up trellis); grows well with almost any vegetable; adds nitrogen to the soil
CATNIP	Plant in borders; protects against flea beetles	PETUNIAS	Protects beans, beneficial throughout the garden
CELERY	Leeks, tomatoes, bush beans, cauliflower & cabbage	PUMPKINS	Corn
CHAMOMILE	Cabbage & onions	RADISH	Peas, nasturtium, lettuce, cucumbers; as a general aid in repelling insects
CHERVIL	Carrots; plant around base of fruit trees to discourage insects from climbing trunk	ROSEMARY	Carrots, beans, cabbage, sage; deters cabbage moth, bean beetles and carrot fly
CHIVES	Radishes (improves growth and flavor)	SAGE	Rosemary, carrots, cabbage, peas & beans; deters some insects
CORN	Potatoes, peas, beans, cucumbers, pumpkin & squash	SOYBEANS	Grows with anything, helps everything
CUCUMBERS	Beans, corn, peas, radishes, & sunflower	SPINACH	Strawberries
DILL	Cabbage (improves growth and health), carrots	SQUASH	Bean & onions; deters bean beetles
EGGPLANT	Beans	STRAWBERRY	Bush beans, spinach, borage, lettuce (as border)
FENNEL	Most plants dislike it	SUMMER SAVORY	Bean & onions; deters bean beetles
FLAX	Carrots & potatoes	SUNFLOWERS	Cucumbers
GARLIC	Rose and raspberries (deters Japanese beetle); helps herbs with their production of essen- tial oils, plant liberally throughout garden to deter pest	TARRAGON	Good throughout garden
GERANIUMS	Near grapes (discourages Japanese beetles)	THYME	Chives, onion, parsley, asparagus, marigold, nasturtium, carrots & lima beans
HORSERADISH	Potatoes (deters potato beetle), around plum trees to discourage curculios	TURNIPS	Peas

Combination of vegetables, herbs, and flowers are mutually beneficial, according to current reports compiled from Organic Gardening and Farming.



FRUIT & VEGGIE PLANTING CHART

NAME OF VEGETABLE	TIME TO PLANT INDOORS	SEED OR PLANTS 50-FOOT ROW	SEED OR PLANTS	DAYS UNTIL READY	DIST. APART IN ROW	PLANTING DEPTH	ROWS APART
Asparagus Seed	April 1 to 15	1 oz.	2 to 2 ^{1/2} lbs.	3 to 4 yrs.		1-2	18-24
Bush Snap Beans	May 1 to August 5	2 pkts.	1 ^{1/2} bu.	45 to 75	3-6	1-2	24-30
Bush Lima Beans	May 15 to June 20	1/2 lb.	1 ^{1/2} bu.	65 to 100	6 -8	1-2	30
Pole Lima Beans	May 15 to June 20	2 pkts.	1/2 to 3/4 bu.	75 to 120	12-18	1-2	30-36
Pole Beans	May 10 to July 20	2 pkts.	20 to 40 lbs.	65 to 110	18-24	1-2	30-36
Beets, Table	April to August	1/2 oz.	1 to 6 lbs.	60 to 70	2-3	1	12-18
Beets, Stock	April to July	1/2 oz.	8 to 10 lbs.	70 to 80	4-6	1	15-18
Cabbage	April to June	1 pkt.	3/4 to 1 lb.	110 to 130		1/2	30
Cabbage Plants	April 1 to July 20	20 to 25 plts.	8 to 10,000 plts.	90 to 100	18-20		30-36
Carrots	April to July	1/2 oz.	3 to 5 lbs.	65 to 120	2-3	1/2	12-18
Cauliflower	April to July	25 plts.	8 to 10,000 plts.	85 to 140	18 -24	1/2	30-36
Celery	April 1 to May 10	2 pkts.	10 to 12 ozs.	125 to 150		1/8	12-30
Corn, Sweet	May 10 to July 10	1 pkt.	8 to 12 lbs.	65 to 110	10-12	1-2	30-36
Cucumbers	May 15 to July	2 pkts.	2 to 4 lbs.	60 to 85	48-72	1	48
Eggplant	Plants May 20	25 plts.	7,000 plts.	120 to 160	18-24	1/2	30
Kohlrabi	April to July	2 pkts.	4 lbs., 25,000 plts.	66 to 85	6-8	1/2	15-18
Lettuce	April to September	2 pkts.	4 lbs.	65 to 100		1/4	12-18
Muskmelon	May 15 to June 15	1 pkt.	2 to 4 lbs.	95 to 120	48-72	1	48-72
Mustard	April to August	1 pkt.	2 to 5 lbs.	60 to 72	1-3	1/2	12-18
Onion Seed	Early as possible	1 pkt.	5 lbs. seed	90 to 130	2-3	1/2-2	12-18
Onion Sets	March to July	2 lbs.	10 to 12 bu.	40 to 60	2-3	1-2	12-18
Parsley	April, May	2 pkts.	2 to 3 lbs.	70 to 100	3-6	1/4	12-18
Parsnips	March, April	2 pkts.	4 to 5 lbs.	130 to 160	5-12	1/2	12-18
Peas	March, April	2 pkts.	1 to 2 bu.	60 to 80	2	2	15-24
Pepper Plants	May 20	20 to 25 plts.	7,000 plts.	135 to 160	18-24	1/2	24-36
Potatoes, (Eyes)	April to July	50 eyes	15 to 25 bu.	75 to 130	12-14	4	24-30
Potatoes, Sweet	May 15 to June	15 plts.	15,000 plts.	120 to 140	15-18		30-34
Pumpkins	May 20	1/2 oz. 18 hills	3 lbs.	140 to 160	72-86	1	96
Radish	April to September	2 pkts.	6 to 10 lbs.	25 to 50	2-3	1	12-18
Rutabaga	July, August	2 pkts.	1 to 3 lbs.	75 to 80	3-6	1	12-18
Spinach	April, Aug. Sept.	1/2 oz.	10 to 20 lbs.	60 to 75	2-3	1	12-18
Squash	May 20	1/2 oz., 13 hills	4 to 5 lbs.	60-120	48	1-2	48-72
Swiss Chard	April to July	1/2 oz.	4 to 5 lbs.	60 to 75	18-24	1	24-30
Tomato Seeds	May, June	1 pkt.	1/4 lb.	90 to 140		1/2	
Tomato Plants	May 10 to July 10	15 plts.	Staked 4,000 Flat 2,800	60 to 90	24-48		36-48
Turnips	April, Aug. Sept	2 pkts.	2 to 3 lbs.	50 to 75	3-4	1/2	12-18
Watermelon	May 20 to June 1	1 pkt.	4 to 6 lbs.	100 to 140	72-90	1	72-90

BEST DATES TO START SEEDS FOR TRANSPLANTING

Variety	Seed Starting Time	Transplant Time
Broccoli	March 15	6 - 8 wks.
Cabbage	March 1	7 - 9 wks.
Cauliflower	March 15	6 - 8 wks.
Cucumbers	April 1	3 - 5 wks.
Eggplant	March 15	6 - 8 wks.
Muskmelon		4 - 5 wks.
Parsley	March 1	8 - 9 wks.
Peppers	March 15	6 - 8 wks.
Tomatoes	March 15	6 - 8 wks.
Watermelon	April 1	4 - 5 weeks

NOTE: Planting dates are given for the vicinity of Shenandoah, Iowa, at the 40th latitude. Allow about 3 days difference for every 50 miles of latitude; South, earlier; North, later.

pkts. - packets plts. - llets . - bushels

CHART OF POPULAR PERENNIALS

VARIETY	ROOT TYPE	LATERAL SPACING	SUN/SHADE	HEIGHT (SEE GUIDE BELOW LEFT)	BLOOM TIME			
					APRIL-MAY	JUNE-JULY	AUGUST	AUG-OCT
Achillea (Yarrow)	Fibrous	10 - 20	Sun	Medium			X	X
				Tall	X	X		
Artemesia	Fibrous	8 - 10	Sun or Light Shade	Low				
				Medium			X	X
Astilbe	Fleshy	12 - 18	Sun/Shade	Medium		X	X	
				Low		X	X	
Carnation-Dianthus	Fibrous	10	Sun	Low		X	X	
				Low to Medium			X	X
Chrysanthemum (Shasta Daisy)	Fibrous	12 - 18	Sun/Part Shade	Low to Medium		X	X	
				Train on Trellis	X		X	
Coneflowers	Fibrous	12	Sun	Medium		X	X	X
				Medium			X	X
Daylilies	Fleshy	12	Sun	Medium			X	X
				Tall		X	X	
Digitalis-Foxglove	Fibrous	9 - 12	Shade	Tall		X	X	
				Tall			X	
Gypsophila-Baby's Breath	Fleshy	18 - 24	Sun	Low to Medium	X	X		
				Tall		X	X	
Heuchera-Coral Bells	Fibrous	12 - 16	Sun/Shade	Medium			X	X
				Medium				
Papauer-Oriental Poppy	Fleshy	12	Sun	Medium	X	X		
				Medium		X	X	
Rudbeckia-Black-Eyed Susan	Fibrous	18	Sun/Shade	Medium			X	X
				Dwarf	X			
Salvia	Fibrous	16	Sun/Shade	Medium		X		
				Low		X	X	
Tritoma-Red Hot Poker	Fleshy	18 - 20	Sun/Shade	Medium			X	X
Veronica	Fibrous	12	Sun/Shade	Medium		X	X	

ULTIMATE HEIGHT
SEE PAGE @ RIGHT

Dwarf....Not over 6 inches
Low....12 to 18 inches
Med....2 to 3 feet
Tall....3 to 6 feet

BLOOM TIME

APR-MAY....SPRING: April- May
JUN-JUL....EARLY SUMMER: June-July
AUG....LATE SUMMER: August
AUG-OCT....FALL: August-October

ORDERING INFORMATION

1. Order online at **earlmay.com** for **in store pickup** and **ship to home** options.

OR 2. PHONE in your order Toll Free: (800) 831-4193 8am - 4:30pm CST

PRICING: These prices apply only to such quantities of seed included in this catalog. Orders less than quantities listed are subject to an additional charge. Prices set for December 1, 2021 through October 2022 but may be updated and/or changed at any time. Please visit earlmay.com for current pricing and availability.

TERMS: We accept Visa, Mastercard, American Express and Discover online or over the phone. Phone 1-800-831-4193 from anywhere in the continental United States to order using a credit card. Payments made by check will not be shipped until check is recieved.

SHIPPING: We primarily ship with USPS. Our perishables, such as potatoes, onion sets, and onion plants are shipped UPS. Seller shall not be responsible for loss or damage caused by the carrier.

BACK ORDERS: If an item is temporarily out of stock, you will be promptly notified. This item will be shipped to you immediately upon stock arrival. (Your shipping document will be marked with back order, “B.O.”, or “Out-of-Stock” at time of shipment.)

PHONE ORDERS: Our customer service staff is available from 8:00am to 4:30pm CST Monday through Friday (except holidays).

PHONE: (712) 246-1020 **TOLL FREE:** (800) 831-4193

EMAIL: emdirect@earlmay.com

CONDITIONS OF SALE:

CONDITIONS OF SALE PERTAINING TO WARRANTY, DISCLAIMER OF WARRANTIES, AND LIMITATION OF LIABILITY AND REMEDIES

Earl May Seed and Nursery L.C. (“Earl May Seed & Nursery”) warrants that all seeds, bulbs, plants, materials, or other merchandise sold are as described on the label within recognized tolerances. THIS WARRANTY IS IN LIEU OF ALL OTHER WARRANTIES, EXPRESS OR IMPLIED, INCLUDING, WITHOUT LIMITATION, THE WARRANTIES OR MERCHANTABILITY AND FITNESS. Earl May Seed & Nursery gives no warranty, express or implied, as to productiveness or purity of the product purchased or the crop produced from any seeds, bulbs, plants, materials, or other merchandise purchased. Earl May Seed & Nursery’s liability, whether contractual, for negligence, for strict liability, or otherwise, is limited to the purchase price for the seeds, bulbs, plants, materials, or other merchandise under all circumstances and regardless of the nature, cause, or extent of any loss. IN NO EVENT SHALL EARL MAY SEED & NURSERY BE LIABLE FOR INCIDENTAL OR CONSEQUENTIAL DAMAGES. No liability hereunder shall be asserted unless Purchaser or user reports to Earl May Seed & Nursery be registered mail, return receipt requested, any complaints within reasonable period after discovery (not to exceed 30 days). Seeds, bulbs, plants, materials, or other merchandise not accepted on the basis of the foregoing conditions of sale must be returned within 30 days in the original unopened containers and the purchase price will be refunded. Earl May Seed & Nursery reserves the right to update and change pricing and availability at any time. For current pricing and availability please visit www.earlmay.com. The foregoing conditions of sale represent the entire agreement between the parties as to warranties or any other liabilities of Earl May Seed & Nursery and the remedy therefor.

TAX EXEMPT CUSTOMERS: In order to comply with state sales tax laws, Earl May Seed & Nursery is required to collect sales tax on all sales of product to customers that reside in the four states in which we have physical presence (or nexus). Earl May Seed & Nursery operates garden centers in the states of Iowa, Kansas, Missouri, and Nebraska and, therefore, is required to collect sales tax on product shipped to addresses within those states. All orders shipped to these states will be charged sales tax unless the purchase qualifies as being exempt from sales tax for reasons such as resale, agricultural purposes, etc. If you have valid qualification for exemption from sales tax, you must provide proof by completing and submitting to us the enclosed Multi-Jurisdiction Uniform Sales & Use Tax Certificate. This form must be completed in full and signed by an authorized person. Forms may be faxed or emailed as follows:

Email: emdirect@earlmay.com

for current pricing and availability please visit us online @earlmay.com

TAX EXEMPT FORM PLEASE PRINT LEGIBLY

UNIFORM SALES & USE TAX EXEMPTION/RESALE CERTIFICATE — MULTIJURISDICTION

The below-listed states have indicated that this certificate is acceptable as a resale/exemption certificate for sales and use tax, subject to the notes on pages 2—4. The issuer and the recipient have the responsibility to determine the proper use of this certificate under applicable laws in each state, as these may change from time to time.

Issued to Seller: Earl May Seed & Nursery L. C.

Address: 208 N. Elm St., Shenandoah, IA 51601

I certify that:
Name of Firm (Buyer): _____
Address: _____

is engaged as a registered
☐ Wholesaler
☐ Retailer
☐ Manufacturer
☐ Seller (California)
☐ Lessor (see notes on pages 2—4)
☐ Other (Specify) _____

and is registered with the below-listed states and cities within which your firm would deliver purchases to us and that any such purchases are for wholesale, resale, or ingredients or components of a new product or service to be resold, leased, or rented in the normal course of business. We are in the business of wholesaling, retailing, manufacturing, leasing (renting) selling (California) the following:

Description of Business: _____

General description of tangible property or taxable services to be purchased from the Seller: _____

State	State Registration, Seller’s Permit, or ID Number of Purchaser	State	State Registration, Seller’s Permit, or ID Number of Purchaser
AL ¹		MO ¹⁶	
AR		NE ¹⁶	
AZ ²		NV	
CA ³		NJ	
CO ⁴		NM ^{4,17}	
CT ⁵		NC ¹⁸	
FL ⁶		ND	
GA ⁷		OH ¹⁹	
HI ^{4,8}		OK ²⁰	
ID		PA ²¹	
IL ^{4,9}		RI ²²	
IA		SC	
KS		SD ²³	
KY ¹⁰		TN	
ME ¹¹		TX ²⁴	
MD ¹²		UT	
MI ¹³		VT	
MN ¹⁴		WA ²⁵	
		WI ²⁶	

I further certify that if any property or service so purchased tax free is used or consumed as to make it subject to a Sales or Use Tax we will pay the tax due directly to the proper taxing authority when state law so provides or inform the Seller for added tax billing. This certificate shall be a part of each order that we may hereafter give to you, unless otherwise specified, and shall be valid until canceled by us in writing or revoked by thee city or state.

Under penalties of perjury, I swear or affirm that the information on this form is true and correct as to every material matter.

Authorized Signature: _____
(Owner, Partner, or Corporate Officer, or other authorized signer)

Title: _____
Date: _____

REVISED 3/13/2019



CUT HERE

ORDER FORM

PLEASE PRINT LEGIBLY

CUT HERE



VARIETY		SIZ	TY.	PRIC
ASPARAGUS				
MARY WASHINGTON (200)	PKT	3g		\$2.99
		4oz		\$13.75
		8oz		\$24.00
		1 lb.		\$39.00
BEANS				
DARK RED KIDNEY (DRY SHELL) (110)		8oz		\$7.00
		1lb		\$16.00
		4lb		\$24.00
DWARF HORTICULTURE TAYLOR (DRY SHELL) (111)		8oz		\$7.00
		1lb		\$16.00
		4lb		\$24.00
BURPEES STRINGLESS (GREEN POD) (102)	PKT	2oz		\$2.99
		5oz		\$6.99
		1lb		\$16.00
BUSH BLUE LAKE 274 (GREEN POD) (100)	PKT	2oz		\$2.99
		5oz		\$6.99
		1lb		\$15.99
		4lb		\$24.00
	LG PKT	5oz		\$6.99
		1lb		\$15.99
		4lb		\$24.00
		10lb		\$52.00
CONTENDER (GREEN POD) (107)	PKT	2oz		\$2.99
		5oz		\$6.99
		1LB BAG		\$15.99
		4lb		\$24.00
	LG PKT	5oz		\$6.99
		1lb		\$15.99
		4lb		\$24.00
		10lb		\$52.00
IMPROVED TENDERGREEN (GREEN POD) (104)	PKT	2oz		\$2.99
		5oz		\$6.99
		1lb		\$16.00
		4lb		\$24.00
	LG PKT	5oz		\$6.99
		1lb		\$16.00
		4lb		\$24.00
		10lb		\$52.00
ROYAL BURGUNDY (106)	PKT	1.5oz		\$2.99
		8oz		\$7.00
		1lb		\$16.00
		4lb		\$24.00
SLEDNDERETTE (GREEN POD) (108)	PKT	1.5oz		\$2.99
		8oz		\$7.00
		1lb		\$16.00
		4lb		\$24.00
TOPCROP (GREEN POD) (105)	PKT	2oz		\$2.99
		5oz		\$6.99
		1lb		\$15.99
		4lb		\$24.00
	LG PKT	5oz		\$6.99
		1lb		\$15.99
		4lb		\$24.00
		10lb		\$52.00
FORDHOOK 242 (POTATO LIMA) (112)	PKT	2oz		\$2.99
		8oz		\$7.00
		1lb		\$16.00
		4lb		\$24.00
HENDERSON (BUSH LIMA) (113)		8oz		\$7.00
		1lb		\$16.00
		4lb		\$24.00
BLUE LAKE FM-1 (POLE SNAP) (133)	PKT	2oz		\$2.99
		5oz		\$6.99
		1lb		\$16.00
		4lb		\$24.00
	LG PKT	5oz		\$6.99
		1lb		\$16.00
		4lb		\$24.00
		10lb		\$52.00
KENTUCKY BLUE (POLE SNAP) (134)	PKT	1.5oz		\$3.99
		8oz		\$9.00
		1lb		\$16.00
		4lb		\$42.00

VARIETY		SIZE	TY.	PRIC
CHEROKEE GOLDEN WAX (WAX POD) (129)				
	PKT	1.5oz		\$2.99
		8oz		\$7.00
		1lb		\$16.00
		4lb		\$24.00
BEETS				
CYLINDRA (202)				
	PKT	4g		\$2.99
		8oz		\$9.75
		1 lb		\$17.00
DETROIT DARK RED (205)				
	PKT	4g		\$2.99
		LG PKT	14g (1/2oz)	\$4.99
		8oz		\$9.75
		1lb		\$17.00
EARLY WONDER (206)				
	PKT	4g		\$2.99
		LG PKT	14g (1/2oz)	\$4.99
		8oz		\$10.00
		1lb		\$18.00
HYBRID RED ACE (212)				
	PKT	3g (180sd)		\$2.99
		1000 sd		\$9.75
		5000 sd		\$31.00
RAINBOW BLEND (214)				
	PKT	3g		\$2.99
		1oz		\$8.00
		4oz		\$19.00
RUBY QUEEN (208)				
	PKT	4g		\$2.99
		8oz		\$9.75
		1lb		\$17.00
BROCCOLI				
BROCCOLI - CASTLE DOME (934)				
	PKT	525mg (90sd)		\$3.99
		500 sd		\$15.00
		1000 sd		\$26.00
		2500 sd		\$49.00
BROCCOLI - WALTHAM (931)				
	PKT	800mg		\$2.99
		1oz		\$7.00
		4oz		\$18.00
		8oz		\$24.00
BRUSSEL SPROUTS				
LONG ISLAND IMPROVED (940)				
		1oz		\$6.00
		4oz		\$15.00
CABBAGE				
STONEHEAD (HYBRID) (241)				
	PKT	525mg (80sd)		\$3.99
		500 sd		\$10.75
		1,000 sd		\$20.00
COPENHAGEN MARKET (232)				
	PKT	1.6g		\$2.99
		4oz		\$7.00
		8oz		\$12.00
		1lb		\$20.00
CARROTS				
DANVER'S HALF LONG (306)				
	PKT	2.4g		\$2.99
		4oz		\$9.00
		8oz		\$16.50
		1lb		\$28.00
HYBRID INGOT (305)				
	PKT	1.2g (1250sd)		\$3.99
		5000 sd		\$9.75
		10000 sd		\$18.00
LITTLE FINGER (301)				
	PKT	1g		\$2.99
		4oz		\$12.00
		8oz		\$20.75

VARIETY		SIZE	QTY.	PRICE	
RAINBOW BLEND (309)	PKT	525mg		\$2.99	
		1/2oz		\$14.50	
		1oz		\$26.00	
ROYAL CHANTENAY (CORELESS) (300)	PKT	2.4g		\$2.99	
		4oz		\$9.00	
		8oz		\$18.00	
		1lb		\$29.00	
SCARLET NANTES (303)	PKT	2.4g		\$2.99	
		LG PKT	14g (1/2oz)		\$5.99
		4oz		\$8.00	
		8oz		\$14.00	
		1lb		\$22.00	
CAULIFLOWER					
SNOWBALL Y IMPROVED (330)	PKT	850mg		\$2.99	
		4oz		\$15.00	
		8oz		\$25.00	
		1lb		\$45.00	
ORNAMENTAL CORN					
MINI CORN-CAROUSEL (166)	PKT	14g		\$4.99	
		8oz		\$14.00	
		1lb		\$25.00	
FIESTA HYBRID (INDIAN) (168)	PKT	14g		\$4.99	
		8oz		\$14.00	
		1lb		\$25.00	
STRAWBERRY (165)		8oz		\$14.00	
		1lb		\$25.00	
BROOM CORN - MIXED COLORS (167)	PKT	14g		\$4.99	
		4oz		\$11.00	
		8oz		\$18.00	
		1lb		\$32.00	
MINI BLUE (170)		4oz		\$8.00	
		8oz		\$14.00	
		1lb		\$34.00	
POPPING CORN					
HYBRID ROBUST R997 (162)	PKT	1.5 oz		\$6.99	
		LG PKT	5 oz		\$19.99
		1lb		\$34.00	
		3.5lb		\$65.00	
		10lb		\$134.00	
HYBRID ROBUST 98114W (164)	PKT	1.5oz		\$6.99	
		LG PKT	5oz		\$19.99
		1lb		\$34.00	
		3.5lb		\$65.00	
		10lb		\$134.00	
SWEET CORN					
4TH OF JULY (NORMAL SUGARY) (139)	PKT	1.5oz		\$5.99	
		Lg PKT.	5oz		\$17.99
		3.5lb		\$59.00	
		10lb.		\$148.00	
HYBRID HONEY & CREAM (NORMAL SUGARY) (145)	PKT	1.5oz		\$5.99	
		LG PKT	5oz		\$17.99
		1LB BAG	1lb		\$34.00
		3.5LB BAG	3.5lb		\$59.00
			10lb		\$148.00
HYBRID IOCHIEF (NORMAL SUGARY) (146)		8oz		\$16.00	
		1lb		\$29.00	
		3.5lb		\$48.00	
		10lb		\$112.00	

VARIETY		SIZE	QTY.	PRICE
HYBRID SILVER QUEEN (NORMAL SUGARY) (153)		8oz		\$18.00
		1lb		\$34.00
		3.5lb		\$59.00
		10lb		\$148.00
		25lb		\$320.00
		50lb		\$590.00
HYBRID AMBROSIA SE (SUGAR ENHANCED) (154)	PKT	1.25oz		\$6.99
	LG PKT	5oz		\$19.99
	1LB BAG	1lb		\$44.00
	3.5LB BAG	3.5lb		\$69.00
		10lb		\$156.00
		25lb		\$340.00
	50lb		\$630.00	
HYBRID BODACIOUS RM (SUGAR ENHANCED) (155)	PKT	1.25oz		\$6.99
	LG PKT	5oz		\$19.99
	1LB BAG	1lb		\$44.00
	3.5LB BAG	3.5lb		\$69.00
		10lb		\$152.00
		25lb		\$325.00
	50lb		\$590.00	
HYBRID INCREDIBLE RM (SUGAR ENHANCED) (140)	PKT	1.25oz		\$6.99
	LG PKT	5oz		\$19.99
	1LB BAG	1lb		\$44.00
	3.5LB BAG	3.5lb		\$69.00
		10lb		\$152.00
		25lb		\$325.00
	50lb		\$590.00	
HYBRID JACKPOT (SUGAR ENHANCED) (150)		8oz		\$19.00
		1lb		\$44.00
		3.5lb		\$69.00
		10lb		\$156.00
		25lb		\$340.00
		50lb		\$630.00
HYBRID KANDY KORN (SUGAR ENHANCED) (147)	PKT	1.5oz		\$5.99
	LG PKT	5oz		\$17.99
	1LB BAG	1lb		\$34.00
	3.5LB BAG	3.5lb		\$59.00
		10lb		\$148.00
		25lb		\$320.00
	50lb		\$590.00	
HYBRID PEACHES & CREAM MID (SUGAR ENHANCED) (144)		8oz		\$18.00
		1lb		\$34.00
		3.5lb		\$59.00
		10lb		\$148.00
HONEY SELECT (SUGAR ENHANCED)		3.5lb		\$69.00
		10lb		\$168.00
		25lb		\$370.00
		50lb		\$690.00
HYBRID SILVER KING (SUGAR ENHANCED) (161)		8oz		\$18.00
		1lb		\$34.00
		3.5lb		\$69.00
		10lb		\$156.00
		25lb		\$340.00
		50lb		\$630.00
HYBRID AMERICAN DREAM (SH2) (158)	PKT	1.25oz		\$6.99
	LG PKT	5oz		\$19.99
		5,000 sd		\$56.00
		12,500 sd		\$280.00

ORDER FORM

PLEASE PRINT LEGIBLY

CUT HERE



VARIETY		SIZ	TY.	PRIC
HYBRID HONEY'N PEARL (SH2) (160)	PKT	1.25oz		\$6.99
	LG PKT	5oz		\$19.99
		5,000 sd		\$56.00
		25,000 sd		\$240.00
HYBRID ILLINI XTRA SWEET (SH2) (148)	LG PKT	8oz		\$19.00
		1lb		\$59.00
		3.5lb		\$119.00
HYBRID SERENDIPITY (TRIPLESWEET) (149)	PKT	1.25oz		\$6.99
	LG PKT	5oz		\$19.99
		1lb		\$44.00
	1LB BAG	3.5lb		\$69.00
		10lb		\$168.00
		25lb		\$370.00
		50lb		\$690.00
CUCUMBERS				
BUSH PICKLE O.P. (PICKLER) (369)	PKT	950mg		\$3.99
		1/2oz		\$7.00
		1oz		\$12.00
		4oz		\$35.00
HOMEMADE PICKLES (PICKLER) (368)	PKT	2g		\$2.99
		4oz		\$11.00
		8oz		\$18.00
		1lb		\$31.00
PARISIAN GHERKIN F1 (PICKLER) (362)	PKT	950mg		\$3.99
		1/2oz		\$8.00
		1oz		\$13.00
		4oz		\$36.00
HYBRID PIONEER (MRS. PICKLER) (PICKLER) (363)	PKT	2g		\$3.99
		1oz		\$6.00
		4oz		\$12.00
		8oz		\$20.00
SALADMORE BUSH F1 (PICKLER) (376)	PKT	950mg		\$3.99
		1/2oz		\$9.50
		1oz		\$15.00
		4oz		\$39.00
SMR 58 (PICKLER) (358)	PKT	2g		\$2.99
		4oz		\$7.50
		8oz		\$13.00
		1lb		\$23.00
ARMENIAN (SLICER) (353)	PKT	2g		\$2.99
		4oz		\$9.75
		8oz		\$16.00
		1lb		\$28.00
EVERSWEET (F1) (SLICER) (361)	PKT	950 mg		\$3.99
		1/2oz		\$9.75
		1oz		\$18.00
		4oz		\$39.00
BURPLESS BUSH (SLICER) (371)	PKT	950mg		\$3.99
		1/2oz		\$8.50
		1oz		\$15.00
		4oz		\$39.00
DASHER II HYBRID (SLICER) (359)	PKT	950mg (30sd)		\$3.99
		250 sd		\$13.00
		500 sd		\$23.00
HYBRID DIVA (SLICER) (360)	PKT	950mg (30sd)		\$3.99
		250 sd		\$13.00
		500 sd		\$23.00
		1000 sd		\$39.00

VARIETY		SIZ	TY.	PRIC
HYBRID OLYMPIAN (MRS. SLICER) (SLICER) (352)	PKT	1.2g (50sd)		\$3.99
		500 sd		\$11.00
		1000 sd		\$19.50
STRAIGHT EIGHT (SLICER) (356)	PKT	2g		\$2.99
		4oz		\$8.00
		8oz		\$14.00
		1lb		\$24.00
HYBRID TASTY GREEN (BURPLESS) (SLICER) (355)	PKT	950mg (30sd)		\$3.99
		100 sd		\$7.50
		250 sd		\$12.00
		500 sd		\$21.00
		1000 sd		\$38.00
EGGPLANT				
BLACK BEAUTY (294)		1oz		\$7.00
		4oz		\$16.00
		8oz		\$23.00
KALE				
RED RUSSIAN (947)	PKT	1g		\$2.99
		8oz		\$12.00
		1lb		\$21.00
DWARF VATES BLUE CURLED SCOTCH (946)	PKT	1.6g		\$2.99
		8oz		\$10.00
		1lb		\$18.00
LACINATO (948)	PKT	1g		\$2.99
		4oz		\$12.00
		8oz		\$21.00
KOHLRABI				
EARLY PURPLE VIENNA (955)	PKT	1g		\$2.99
		4oz		\$6.00
		8oz		\$9.00
		1lb		\$16.00
EARLY WHITE VIENNA (950)	PKT	1g		\$2.99
		4oz		\$6.00
		8oz		\$9.00
		1lb		\$16.00
HYBRID GRAND DUKE (952)	PKT	800mg(250sd)		\$3.99
		500 sd		\$9.75
		1000 sd		\$17.00
		2500 sd		\$35.00
LETTUCE				
BUTTERCRUNCH (BIBB) (414)	PKT	2g		\$2.99
		4oz		\$7.00
		8oz		\$12.00
		1lb		\$19.00
TOM THUMB (BIBB) (413)	PKT	2g		\$2.99
		4oz		\$8.00
		8oz		\$13.00
		1lb		\$23.00

ORDER ONLINE
IN STORE PICK UP
SHIP TO HOME
EARLMAY.COM

ORDER FORM

PLEASE PRINT LEGIBLY

VARIETY		SIZE	QTY.	PRICE
BLACK SEEDED SIMPSON (LOOSELEAF) (402)	PKT	2g		\$2.99
		4oz		\$7.00
		8oz		\$10.00
		1lb		\$17.00
GARDEN LEAF BLEND (LOOSELEAF) (416)	PKT	1g		\$2.99
		1oz		\$6.50
		4oz		\$19.00
GRAND RAPIDS (LOOSELEAF) (406)	PKT	1g		\$2.99
		4oz		\$7.00
		8oz		\$12.00
		1lb		\$19.00
GREEN ICE (LOOSELEAF) (412)	PKT	1g		\$2.99
		1oz		\$12.00
		4oz		\$35.00
LETTUCE-MINI GREENS BLEND (LOOSELEAF) (418)	PKT	1g		\$2.99
		1oz		\$9.00
		4oz		\$29.00
MESCLUN BLEND (LOOSELEAF) (415)	PKT	2g		\$2.99
		1oz		\$7.00
		4oz		\$20.00
RUBY (LOOSELEAF) (405)	PKT	1g		\$2.99
		4oz		\$8.00
		8oz		\$13.00
		1lb		\$23.00
SALAD BOWL (GREEN) (LOOSELEAF) (408)	PKT	2g		\$2.99
		4oz		\$8.00
		8oz		\$13.00
		1lb		\$23.00
PARRIS ISLAND (ROMAINE OR COS) (407)	PKT	2g		\$2.99
		4oz		\$7.00
		8oz		\$12.00
		1lb		\$19.00
RED ROMAINE (ROMAINE OR COS) (410)		4oz		\$8.00
		8oz		\$13.00
		1lb		\$23.00
MICROGREENS				
MILD MIX (420)	PKT	28g		\$5.99
		4oz		\$18.00
		8oz		\$34.00
SPICY MIX (421)	PKT	28g		\$5.99
		4oz		\$18.00
		8oz		\$34.00
MUSTARD				
GREEN WAVE (964)		4oz		\$7.00
		8oz		\$12.00
		1lb		\$19.00
TENDERGREEN (962)		8oz		\$9.75
		1lb		\$17.00
OKRA				
CLEMSON SPINELESS 80 (968)	PKT	4g		\$3.99
		8oz		\$9.00
		1lb		\$15.00
HILL COUNTRY RED (970)	PKT	4g		\$3.99
		8oz		\$15.00
		1lb		\$26.00

CUT HERE



VARIETY		SIZE	QTY.	PRICE
ONION				
RED BURGUNDY (510)		1oz		\$10.00
		4oz		\$20.00
		8oz		\$35.00
WHITE LISBON (515)	PKT	2g		\$2.99
		4oz		\$18.00
		8oz		\$29.00
YELLOW SWEET SPANISH (502)	PKT	2g		\$2.99
		4oz		\$18.00
		8oz		\$29.00
ONION PLANTS AND SETS: TO ORDER CALL 1-800-831-4193				
PARSNIP				
ALL AMERICAN (552)	PKT	2g		\$2.99
		4oz		\$8.00
		8oz		\$13.00
		1lb		\$19.00
PEAS				
ALASAKA WILT RESISTANT (171)	PKT	1.5oz		\$2.99
	LG PKT	5oz		\$6.99
		1lb		\$10.00
		4lb		\$31.00
FROSTY (174)	PKT	1.5oz		\$2.99
		8oz		\$7.00
		1lb		\$10.00
		4lb		\$31.00
GREEN ARROW (178)	PKT	1.5oz		\$2.99
	LG PKT	5oz		\$6.99
		1lb		\$10.00
		4lb		\$31.00
		10lb		\$62.00
LAXTON'S PROGRESS #9 (179)		1lb		\$10.00
		4lb		\$31.00
LITTLE MARVEL (180)	PKT	1.5oz		\$2.99
	LG PKT	5oz		\$6.99
		1lb		\$10.00
		4lb		\$31.00
		10lb		\$62.00
DWARF GREY SUGAR (EDIBLE POD) (192)	PKT	1.5oz		\$2.99
		8oz		\$8.00
		1lb		\$10.00
		4lb		\$31.00
SNAP PEA - SUGAR SNAP (191)	PKT	1.5oz		\$2.99
	LG PKT	5oz		\$6.99
		1lb		\$10.00
		4lb		\$31.00
		10lb		\$62.00
PEPPERS				
ANAHEIM (RED CHILI) (HOT) (580)	PKT	1g		\$3.99
		1/2oz		\$7.00
		1oz		\$10.00
		4oz		\$25.00
EARLY JALAPENO (HOT) (587)	PKT	1g		\$2.99
		1oz		\$9.00
		4oz		\$24.00

ORDER FORM

PLEASE PRINT LEGIBLY

VARIETY		SIZ	TY.	PRIC
CALIFORNIA WONDER (SWEET) (581)	PKT	1g		\$2.99
		1/2oz		\$7.00
		1oz		\$10.00
		4oz		\$25.00
GOLDEN CALIFORNIA WONDER (SWEET) (582)		1/4 oz		\$7.00
		1/2 oz		\$10.00
		1oz		\$25.00
MINI BELL BLEND (SWEET) (578)	PKT	310mg		\$3.99
		1/8oz		\$9.75
		1/4oz		\$17.00
		1/2oz		\$30.00
SWEET BANANA (SWEET) (584)	PKT	1g		\$2.99
		1oz		\$9.00
		4oz		\$24.00
POTATO: TO ORDER CALL 1-800-831-4193				
RADISH				
CHAMPION (647)	PKT	4g		\$2.99
	LG PKT	14g		\$5.99
		8oz		\$9.00
		1lb		\$14.00
CHERRY BELLE (641)	PKT	4g		\$2.99
	LG PKT	14g		\$5.99
		8oz		\$9.00
		1lb		\$14.00
CRAYON COLOR MIX (661)	PKT	2g		\$2.99
		4oz		\$9.00
		8oz		\$16.00
		1lb		\$28.00
EARLY SCARLET GLOBE (640)	PKT	4g		\$2.99
	LG PKT	14g		\$5.99
		8oz		\$9.00
		1lb		\$14.00
EASTER EGG II (660)	PKT	4g		\$2.99
		4oz		\$15.00
		8oz		\$25.00
FRENCH BREAKFAST (644)	PKT	4g		\$2.99
	LG PKT	14g		\$5.99
		8oz		\$9.00
		1lb		\$14.00
GERMAN GIANT (664)	PKT	2g		\$2.99
		4oz		\$10.00
		8oz		\$18.00
		1lb		\$30.00
HAILSTONE (643)	PKT	4g		\$2.99
		8oz		\$9.00
		1lb		\$14.00

ORDER ONLINE
IN STORE PICK UP
SHIP TO HOME
EARLMAY.COM

VARIETY		SIZ	TY.	PRIC
JAPANESE MINOWASE DAIKON (665)	PKT	3g		\$2.99
		8oz		\$9.00
		1lb		\$16.00
PINK BEAUTY (646)	PKT	3g		\$2.99
		4oz		\$9.00
		8oz		\$14.00
		1lb		\$22.00
SPARKLER (658)	PKT	4g		\$2.99
		8oz		\$9.00
		1lb		\$14.00
WATERMELON (666)	PKT	2g		\$2.99
		4oz		\$12.00
		8oz		\$21.00
WHITE ICICLE (654)	PKT	4g		\$2.99
		8oz		\$9.00
		1lb		\$14.00
SPINACH				
BLOOMSDALE (682)	PKT	4g		\$2.99
		LG PKT		\$5.99
		8oz		\$9.00
		1lb		\$14.00
MONSTRUEUX de VIROFLY (684)	PKT	4g		\$2.99
		8oz		\$9.00
		1lb		\$15.00
RED MALABAR (686)	PKT	2g		\$2.99
		1oz		\$16.00
		4oz		\$45.00
HYBRID OLYMPIA (679)	PKT	3g(240 sd)		\$2.99
		1000 sd		\$9.00
		5000 sd		\$38.00
		10000 sd		\$66.00
REFLECT F1 (683)	PKT	3g		\$2.99
		1000 sd		\$9.00
		5000 sd		\$38.00
		10000 sd		\$66.00
SQUASH				
HYBRID AMBASSADOR (SUMMER/ZUCCHINI) (736)	PKT	3g(18sd)		\$3.99
		100 sd		\$15.00
		250 sd		\$29.00
		500 sd		\$49.00
BLACK BEAUTY (SUMMER / ZUCCHINI) (733)	PKT	4g		\$2.99
		4oz		\$8.00
		8oz		\$13.00
		1lb		\$19.00
HYBRID COMMANDER (SUMMER/ZUCCHINI) (739)		100 sd		\$15.00
		250 sd		\$29.00
		500 sd		\$49.00
DARK GREEN ZUCCHINI (SUMMER/ZUCCHINI) (732)	PKT	4g		\$2.99
		4oz		\$8.00
		8oz		\$13.00
		1lb		\$19.00
EARLY PROLIFIC STRAIGHTNECK (SUMMER) (714)	PKT	4g		\$2.99
		4oz		\$8.00
		8oz		\$13.00
		1lb		\$19.50
HYBRID GOLD RUSH (SUMMER/ZUCCHINI) (735)	PKT	3g(20sd)		\$3.99
		100 sd		\$15.00
		250 sd		\$29.00
		500 sd		\$49.00

CUT HERE



CUT HERE

ORDER FORM

PLEASE PRINT LEGIBLY

VARIETY		SIZE	QTY.	PRICE
SUMMER CROOKNECK (SUMMER) (715)		4oz		\$8.00
		8oz		\$13.00
		1lb		\$19.50
BURGESS BUTTERCUP (WINTER) (721)	PKT	4.8g		\$2.99
		4oz		\$10.00
		8oz		\$19.00
		1lb		\$32.00
HYBRID EARLY BUTTERNUT (WINTER) (728)	PKT	3g(30sd)		\$3.99
		100 sd		\$9.00
		250 sd		\$18.00
		500 sd		\$30.00
HONEY BEAR (WINTER) (729)	PKT	3g		\$3.99
		1/2oz		\$9.00
		1oz		\$16.00
		4oz		\$52.00
HONEYNUT (WINTER) (723)		1/2oz		\$9.00
		1oz		\$16.00
		4oz		\$52.00
TABLE KING (BUSH ACORN) (WINTER) (731)	PKT	4g		\$2.99
		4oz		\$9.00
		8oz		\$16.00
		1lb		\$29.00
TABLE QUEEN (ACORN) (WINTER) (730)	PKT	4g		\$2.99
		4oz		\$9.00
		8oz		\$16.00
		1lb		\$29.00
TURKS TURBAN (WINTER) (725)	PKT	5g		\$3.99
		1oz		\$9.00
		4oz		\$23.00
		8oz		\$39.00
VEGETABLE SPAGHETTI (WINTER) (710)	PKT	4.8g		\$2.99
		4oz		\$11.00
		8oz		\$18.00
		1lb		\$30.00
WALTHAM BUTTERNUT (WINTER) (727)	PKT	4g		\$2.99
		4oz		\$9.00
		8oz		\$16.00
		1lb		\$29.00
SWISS CHARD				
LUCULLUS (210)	PKT	3g		\$2.99
		8oz		\$9.00
		1 lb		\$16.00
BRIGHT LIGHTS (211)	PKT	2.4g (150sd)		\$3.99
		1000 sd		\$9.75
		2500 sd		\$19.50
		5000 sd		\$31.00
TOMATO				
HYBRID BETTER BOY (763)	PKT	145mg(35sd)		\$3.99
		250 sd		\$18.00
		500 sd		\$35.00
		1000 sd		\$55.00
HYBRID BETTER BUSH (778)		250 sd		\$18.00
		500 sd		\$33.00
		1000 sd		\$49.00
HYBRID BIG BEEF (750)	PKT	145mg(35sd)		\$3.99
		250 sd		\$24.00
		500 sd		\$39.00
		1000 sd		\$65.00

VARIETY		SIZE	QTY.	PRICE
HYBRID BIG BOY (770)	PKT	145mg(65sd)		\$3.99
		250 sd		\$18.00
		500 sd		\$35.00
		1000 sd		\$55.00
HYBRID CELEBRITY (752)	PKT	170mg(35sd)		\$3.99
		250 sd		\$24.00
		500 sd		\$39.00
		1000 sd		\$65.00
HYBRID SUPERSWEET 100 (780)	PKT	110mg(70sd)		\$3.99
		250 sd		\$15.00
		500 sd		\$26.00
		1000 sd		\$48.00
AMISH PASTE (774)		1/4oz		\$12.00
		1/2oz		\$18.00
		1oz		\$33.00
HEIRLOOM RAINBOW BLEND (775)	PKT	170mg		\$3.99
		1/4oz		\$12.00
		1/2oz		\$18.00
		1oz		\$33.00
ROMA (772)	PKT	800mg		\$2.99
		1oz		\$12.00
		4oz		\$33.00
RUTGER'S (765)	PKT	800mg		\$2.99
		1oz		\$9.00
		4oz		\$30.00
TURNIPS				
PURPLE TOP WHITE GLOBE (818)	PKT	3g		\$2.99
		LG PKT		
		1oz		\$5.99
		8oz		\$8.00
		1lb		\$11.00
		5lb		\$42.00
		LG. QTY. CALL to ORDER 1-800-831-4193		
HYBRID WHITE LADY (816)	PKT	1.6g		\$3.99
		1/2oz		\$15.00
		1oz		\$24.00
MUSKMELON				
HYBRID AMBROSIA (426)	PKT	800mg (25sd)		\$4.99
		50 sd		\$11.00
		100 sd		\$21.00
		250 sd		\$39.00
		500 sd		\$70.00
HYBRID BURPEE (429)		50 sd		\$11.00
		100 sd		\$21.00
		250 sd		\$39.00
		500 sd		\$70.00
DELICIOUS 51 (440)	PKT	2g		\$3.99
		4oz		\$13.00
		8oz		\$23.00
		1lb		\$42.00
HALE'S BEST JUMBO (430)	PKT	2g		\$3.99
		4oz		\$9.00
		8oz		\$14.00
		1lb		\$24.00
MINNESOTA MIDGET (448)	PKT	2g		\$3.99
		4oz		\$13.00
		8oz		\$23.00
		1lb		\$39.00
WATERMELON				
SWEET BEAUTY HYBRID (482)	PKT	600mg		\$4.99
YELLOW BABY DOLL F1 (492)	PKT	950mg		\$4.99
		1/2oz		\$15.00
		1oz		\$26.00

ORDER FORM

PLEASE PRINT LEGIBLY

VARIETY		SIZ	TY.	PRIC
BLACK DIAMOND (479)	PKT	4.8g		\$3.99
		4oz		\$9.00
		8oz		\$16.00
		1lb		\$29.00
BUSH SUGAR BABY (472)	PKT	1g		\$3.99
		1/2oz		\$9.00
		1oz		\$16.00
		4oz		\$47.00
CRIMSON SWEET (478)	PKT	3g		\$3.99
		4oz		\$13.00
		8oz		\$23.00
		1lb		\$39.00
SUGAR BABY (485)	PKT	3g		\$3.99
		4oz		\$13.00
		8oz		\$23.00
		1lb		\$39.00
HYBRID TRIPLE CROWN (SEEDLESS) (488)	PKT	10 sd		\$5.99
HERBS				
ARUGULA-ROCKET (ANNUAL) (927)	PKT	1.6g		\$2.99
		8oz		\$10.00
		1lb		\$18.00
BASIL-GENOVESE (908)	PKT	1.6g		\$2.99
		4oz		\$10.00
		8oz		\$16.00
BASIL-ITALIAN LARGE LEAF (ANNUAL) (909)	PKT	1g		\$2.99
		4oz		\$8.00
		8oz		\$14.00
BASIL-LETTUCE LEAF (ANNUAL) (907)	PKT	525mg		\$2.99
		1oz		\$11.00
		4oz		\$29.00
CHAMOMILE (ANNUAL) (918)		1/2oz		\$7.00
		1oz		\$12.00
		4oz		\$35.00
CORIANDER (CILANTRO) (ANNUAL) (926)	PKT	2g		\$2.99
		4oz		\$8.00
		8oz		\$12.00
DILL - FERNLEAF (ANNUAL) (905)	PKT	310mg		\$2.99
		1/4oz		\$12.00
		1/2oz		\$22.00
DILL - LONG ISLAND MAMMOTH (ANNUAL) (906)	PKT	1.6g		\$2.99
		8oz		\$11.00
		1lb		\$20.00
PARSLEY - FOREST GREEN (ANNUAL) (901)	PKT	2g		\$2.99
		4oz		\$7.00
		8oz		\$11.00
PARSLEY-GIANT OF ITALY (ANNUAL) (902)	PKT	2g		\$2.99
		1oz		\$8.00
		4oz		\$19.75
CATNIP (PERENNIAL) (925)	PKT	310mg		\$2.99
		1oz		\$8.00
		4oz		\$19.00

VARIETY		SIZ	TY.	PRIC
CHIVES (PERENNIAL) (916)	PKT	1g		\$2.99
		1oz		\$7.00
		4oz		\$18.00
LAVENDER (PERENNIAL) (922)		1/2oz		\$13.00
		1oz		\$21.00
OREGANO (ORIGANUM VULGARE) (PERENNIAL) (924)	PKT	212mg		\$2.99
		1/4oz		\$8.00
		1/2oz		\$12.00
ROSEMARY (PERENNIAL) (921)	PKT	212mg		\$2.99
SAGE, BROADLEAF (PERENNIAL) (915)	PKT	1g		\$2.99
		1oz		\$12.00
		4oz		\$35.00
THYME (PERENNIAL) (911)	PKT	525mg		\$2.99
		1/2oz		\$10.00
		1oz		\$16.00
GOURDS				
LARGE KINDS MIX (1339)	PKT	5g		\$3.99
		1oz		\$9.00
		4oz		\$24.00
		8oz		\$39.00
SMALL KINDS MIX (1338)	PKT	4g		\$3.99
		1oz		\$9.00
		4oz		\$24.00
		8oz		\$39.00
PUMPKINS				
ATLANTIC GIANT (607)	PKT	3g		\$4.99
		1/2oz		\$8.00
		1oz		\$14.00
		4oz		\$33.00
BABY BOO (618)	PKT	1.6g		\$3.99
		1/2oz		\$9.00
		1oz		\$15.00
BIG MAX (604)	PKT	5g		\$3.99
		4oz		\$8.00
		8oz		\$14.00
		1lb		\$27.00
CINDERELLA (620)	PKT	2.4g		\$4.99
		1oz		\$10.00
		4oz		\$29.00
CONNECTICUT FIELD (622)		4oz		\$8.00
		8oz		\$13.00
		1lb		\$20.00
HOWDEN (624)		1oz		\$6.00
		4oz		\$16.00
		8oz		\$26.00
		1lb		\$48.00
HOWDEN BIGGIE (601)	PKT	2.4g(10sd)		\$4.99
		50 sd		\$10.00
		100 sd		\$19.00
		250 sd		\$37.00
JACK BE LITTLE (609)	PKT	1.6g		\$3.99
		1oz		\$9.00
		4oz		\$28.00
JACK OLANTERN (606)	PKT	6g		\$3.99
		4oz		\$9.00
		8oz		\$16.00
		1lb		\$29.00

CUT HERE



CUT HERE

ORDER FORM

PLEASE PRINT LEGIBLY

VARIETY		SIZE	QTY.	PRICE
LUMINA (614)	PKT	4g		\$4.99
		1oz		\$17.00
		4oz		\$49.00
HYBRID MAGIC LANTERN (602)	PKT	2.4g(10sd)		\$4.99
		50 sd		\$10.00
		100 sd		\$19.00
		250 sd		\$37.00
SMALL SUGAR PIE (610)	PKT	5g		\$3.99
		4oz		\$8.00
		8oz		\$14.00
		1lb		\$20.00
HYBRID WEE-B-LITTLE (608)	PKT	1.6g		\$3.99
		1/2oz		\$9.00
		1oz		\$17.00
		4oz		\$54.00
ANNUAL FLOWERS				
BACHELOR BUTTON-POLKA DOT (1072)	PKT	1g		\$2.99
		4oz		\$9.75
		8oz		\$17.00
BEE'S FRIEND (LACY PHACELIA) (1048)	PKT	2 g		\$2.99
		1oz		\$7.00
		4oz		\$14.00
		8oz		\$25.00
BLACK-EYED SUSAN VINE (1056)	PKT	1g		\$2.99
		1oz		\$10.00
		4oz		\$22.00
CARDINAL CLIMBER (1333)	PKT	1.6g		\$3.99
		1oz		\$9.00
		4oz		\$28.00
CAT GRASS (1332)	PKT	4g		\$2.99
		1oz		\$9.00
		4oz		\$28.00
COSMOS-COSMIC ORANGE (1084)		250 sd		\$9.00
		500 sd		\$14.00
		1000 sd		\$25.00
COSMOS - SENSATION MIX (1083)	PKT	1.3g		\$2.99
		1oz		\$7.50
		4oz		\$13.00
		8oz		\$23.00
FOUR OCLOCK - MARVEL OF PERU MIX (1124)	PKT	4g		\$2.99
		4oz		\$9.00
		8oz		\$17.00
		1lb		\$32.00
HYACINTH BEAN - RUBY MOON (1335)	PKT	4g		\$3.99
		1/2oz		\$9.00
		1oz		\$17.00
MARIGOLD - CRACKERJACK (AFRICAN) (1169)	PKT	625mg		\$1.99
		1oz		\$7.00
		4oz		\$15.00
		8oz		\$25.00
MARIGOLD - DWARF MIX (AFRICAN) (1186)	PKT	625mg		\$1.99
		1oz		\$10.00
		4oz		\$29.00
MARIGOLD - NAUGHTY MARIETTA (FRENCH) (1188)	PKT	625mg		\$2.99
		1oz		\$8.00
		4oz		\$22.00
		8oz		\$38.00

VARIETY		SIZE	QTY.	PRICE
MARIGOLD - SAFARI MIX (FRENCH) (1196)		500 sd		\$8.00
		1000 sd		\$13.00
MARIGOLD - PETITE MIXED COLORS (FRENCH) (1182)	PKT	625mg		\$1.99
		1oz		\$8.00
		4oz		\$22.00
		8oz		\$38.00
MORNING GLORY - HEAVENLY BLUE (1346)	PKT	2g		\$2.99
		4oz		\$10.75
		8oz		\$20.00
		1lb		\$38.00
MORNING GLORY - MOONFLOWER (1356)	PKT	3g		\$3.99
		4oz		\$17.00
		8oz		\$29.00
		1lb		\$49.00
MORNING GLORY - TALL MIXED (1345)	PKT	2g		\$2.99
		4oz		\$9.75
		8oz		\$18.00
		1lb		\$35.00
NASTURTIUM - WHIRLYBIRD MIXTURE (1203)	PKT	4g		\$2.99
		1oz		\$8.00
		4oz		\$22.00
PORTULACA - DOUBLE FLOWERING MIX (1242)	PKT	425mg		\$2.99
		1/2oz		\$10.00
		1oz		\$16.00
SUNFLOWER - AUTUMN BEAUTY (1100)	PKT	2g		\$2.99
		4oz		\$10.00
		8oz		\$18.00
SUNFLOWER - MAMMOTH GRAY STRIPE (1108)	PKT	7g		\$2.99
		8oz		\$9.00
		1lb		\$16.00
		3lb		\$38.00
		LG Qty. CALL 1-800-831-4193		
SUNFLOWER - RING OF FIRE (1110)	PKT	800mg(30sd)		\$3.99
		250 sd		\$14.75
		500 sd		\$25.00
		1000 sd		\$39.00
ZINNIA - BUSH FLOWERING MIX (SPRITE MIX) (SHORT) (1303)	PKT	1g		\$2.99
		1oz		\$7.50
		4oz		\$16.00
		8oz		\$26.00
ZINNIA - CUT & COME AGAIN MIX (1300)	PKT	1g		\$2.99
		1oz		\$8.00
		4oz		\$17.00
		8oz		\$28.00
ZINNIA - DARK JEWELS MIX (1317)	PKT	1g		\$2.99
		1oz		\$9.00
		4oz		\$28.00
ZINNIA - FIRE FLAME (1287)	PKT	1g		\$2.99
		1oz		\$8.00
		4oz		\$22.00
		8oz		\$37.00

ORDER ONLINE

IN STORE PICK UP

SHIP TO HOME

EARLMAY.COM

ORDER FORM

PLEASE PRINT LEGIBLY

CUT HERE



VARIETY		SIZ	TY.	PRIC
ZINNIA - ILLUMINATION (1283)	PKT	1g		\$2.99
		4oz		\$22.00
		8oz		\$37.00
ZINNIA - LILLIPUT MIX (1304)	PKT	1g		\$2.99
		4oz		\$16.00
		8oz		\$29.00
ZINNIA - SUPER GIANTS MIX (1290)	PKT	1g		\$1.99
		4oz		\$16.00
		8oz		\$29.00
		1lb		\$49.00
ZINNIA - THUMBELINA (SHORT) (1299)	PKT	1g		\$2.99
		1oz		\$10.00
		4oz		\$29.00
ZINNIA - ZAHARA STARLIGHT ROSE (1306)	PKT	106mg(40sd)		\$3.99
		100 sd		\$19.00
		250 sd		\$37.00
PERENNIAL FLOWERS				
PURPLE CONEFLOWER (1540)	PKT	1g		\$2.99
		1oz		\$8.00
		4oz		\$19.00
		8oz		\$31.00
HOLLYHOCK - INDIAN SPRINGS (SINGLE) (1516)	PKT	1g		\$2.99
		1oz		\$8.00
		4oz		\$22.00
HOLLYHOCK - SUMMER CARNIVAL (DOUBLE) (1515)	PKT	625mg		\$2.99
		1oz		\$10.00
		4oz		\$31.00
		8oz		\$44.00
LAVENDER - HYSSOP (1536)	PKT	800mg		\$3.99
		1/2oz		\$10.00
		1oz		\$16.00
		4oz		\$40.00
LUPINE - RUSSELL MIX (1501)	PKT	1.6g		\$3.99
		1oz		\$9.00
		4oz		\$24.00
		8oz		\$39.00
BUTTERFLY MILKWEED (ASCLEPIAS TUBEROSA) (1544)	PKT	310mg		\$2.99
		1/4oz		\$14.00
		1/2oz		\$24.00
COMMON MILKWEED (ASCLEPIAS SYRIACA) (1545)	PKT	260mg		\$2.99
		1/4oz		\$14.00
		1/2oz		\$22.00
ORIENTAL SCARLET POPPY (1505)	PKT	425mg		\$3.99
		1oz		\$12.00
		4oz		\$35.00
SHASTA DAISY ALASKA (1506)	PKT	800mg		\$3.99
		1oz		\$9.00
		4oz		\$24.00
		8oz		\$39.00

ORDER ONLINE
IN STORE PICK UP
SHIP TO HOME
EARLMAY.COM

PLEASE PRINT LEGIBLY

VARIETY		SIZ	TY.	PRIC
FLOWER MIX				
WILDFLOWER-BEE FEED MIX (1533)	PKT	14g		\$4.99
		4oz		\$18.00
		8oz		\$36.00
		1lb		\$59.00
		5lb CALL 1-800-831-4193		
FLOWER MIX-BENEFICIAL BUG (1519)	PKT	6g		\$3.99
		1oz		\$9.00
		4oz		\$22.00
		8oz		\$36.00
		5lb CALL 1-800-831-4193		
WILDFLOWER-BIRD & BUTTERFLY MIX (1531)	PKT	14g		\$4.99
		4oz		\$18.00
		8oz		\$35.00
		1lb		\$59.00
		5lb CALL 1-800-831-4193		
FLOWER MIX-HONEY BEE (1518)	PKT	6g		\$3.99
		1oz		\$9.00
		4oz		\$22.00
		8oz		\$39.00
		5lb CALL 1-800-831-4193		
WILDFLOWER - MIDWEST MIX (1529)	PKT	14g		\$4.99
		4oz		\$18.00
		8oz		\$33.00
		1lb		\$59.00
		5lb CALL 1-800-831-4193		
WILDFLOWER-NATIVE PERENNIAL MIX (1532)	PKT	14g		\$4.99
		4oz		\$29.00
		8oz		\$52.00
		1lb		\$89.00
		5lb CALL 1-800-831-4193		
FLOWER MIX-PERFECT POLLINATOR (1520)	PKT	4g		\$3.99
		1oz		\$12.00
		4oz		\$32.00
		8oz		\$56.00
		5lb CALL 1-800-831-4193		
WILDFLOWER-SHADE MIX (1530)	PKT	14g		\$4.99
		4oz		\$18.00
		8oz		\$33.00
		1lb		\$59.00
		5lb CALL 1-800-831-4193		

ORDER TOTAL \$*

*Order total is for cost of garden seed only. Sales tax (if applicable) and shipping and handling will be charged at time of order confirmation.

PLEASE MAKE YOUR PAYMENT TO:

EARL MAY SEED & NURSERY
ATTENTION: ACCOUNTING
208 NORTH ELM STREET
SHENANDOAH, IA 51601

ORDER FORM

PLEASE PRINT LEGIBLY

SHIPPING/ PAYMENT INFORMATION

PLEASE PRINT LEGIBLY

DATE ORDERED

BILL-TO
(First Name) (Last Name)
ADDRESS 1
ADDRESS 2
CITY STATE ZIP
PHONE CELL PHONE
EMAIL

☐ SAME AS BILLING ADDRESS *check box*

SHIP-TO
(First Name) (Last Name)
ADDRESS 1
ADDRESS 2
CITY STATE ZIP
PHONE CELL PHONE
EMAIL

METHOD OF PAYMENT: *check one*

☐ CASH ☐ CHECK ☐ VISA ☐ MASTERCARD ☐ DISCOVER ☐ AMERICAN EXPRESS

CARDHOLDER'S NAME *(please print legibly)*

CARDHOLDER'S SIGNATURE

CREDIT CARD NUMBER

EXPIRATION DATE SECURITY CODE

EARL MAY USE ONLY

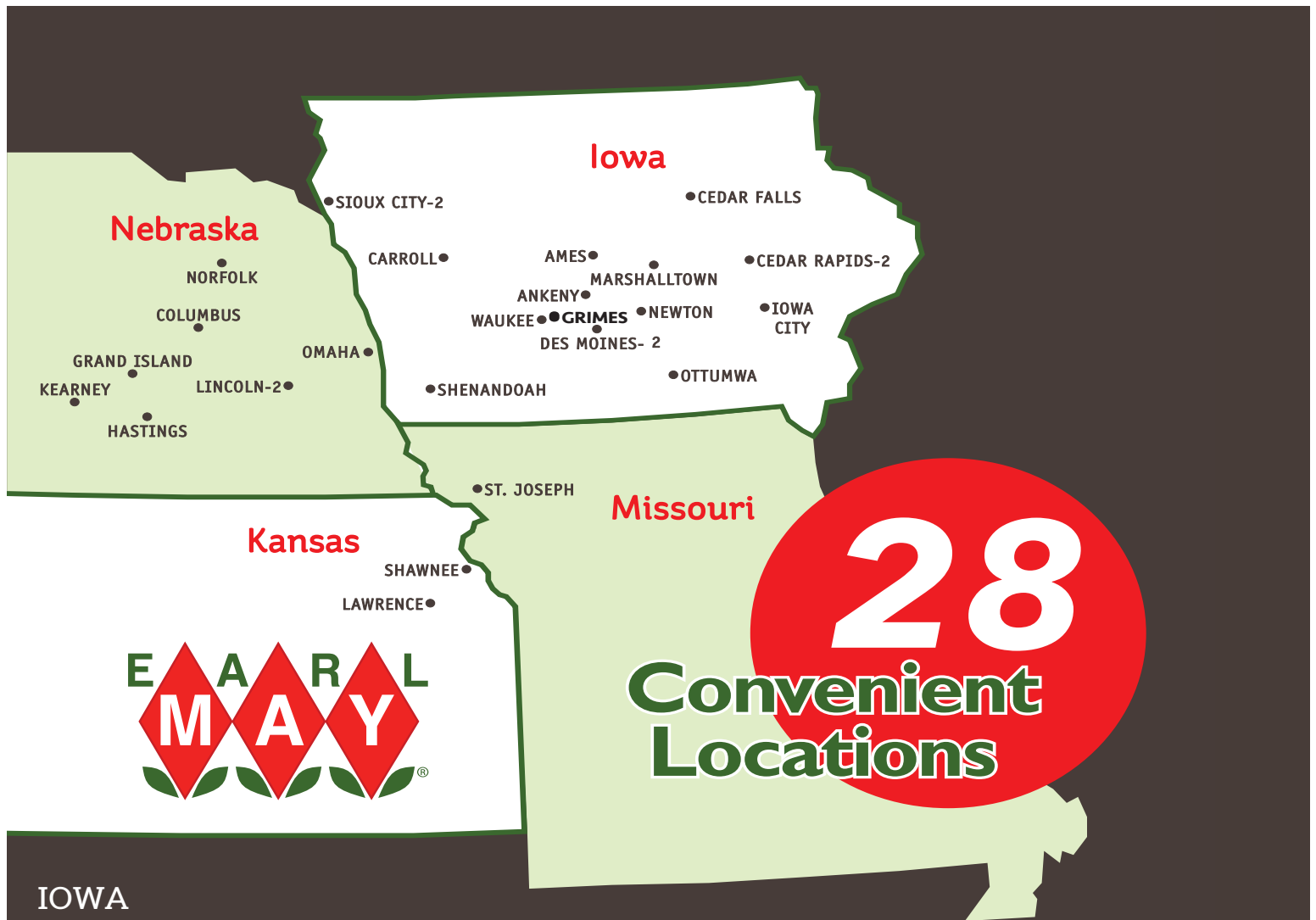
DATE ORDERED

ORDERED BY

SIGNATURE

SHIP BY

CUT HERE



IOWA

Ames • 515/ 232-2929

Carroll • 712/ 792-9660

Cedar Falls • 319/ 277-2021

Cedar Rapids

Edgewood Dr. • 319/ 396-7684

Northland Dr. • 319/ 377-7582

Des Moines Metro Area

Ankeny • 515/ 964-2884

Grimes • 515/ 528-7819

Waukee • 515/ 987-8446

West Des Moines • 515/ 223-8827

7701 SE Bloomfield Rd • 515/ 287-5727

Iowa City • 319/ 354-5028

Marshalltown • 641/ 753-6124

Newton • 641/ 792-4404

Ottumwa • 641/ 682-5617

Shenandoah • 712/ 246-2780

Sioux City

4101 War Eagle Dr. • 712/ 233-2951

4141 E. Gordon Dr. • 712/ 276-4776

KANSAS

Lawrence • 785/ 749-5082

Shawnee • 913/ 422-1505

MISSOURI

St. Joseph • 816/ 232-7375

NEBRASKA

Columbus • 402/ 564-0622

Grand Island • 308/ 382- 8625

Hastings • 402/ 462-6576

Kearney • 308/ 237-2107

Lincoln

48th St. • 402/ 423-5354

71st & "O" St. • 402/ 489-7168

Norfolk • 402/ 371-4660

Omaha • 402/ 391-9778



BUY ONLINE

**PICK UP
IN STORE**

**SHIP TO
HOME**

EARLMAY.COM



always be growing.